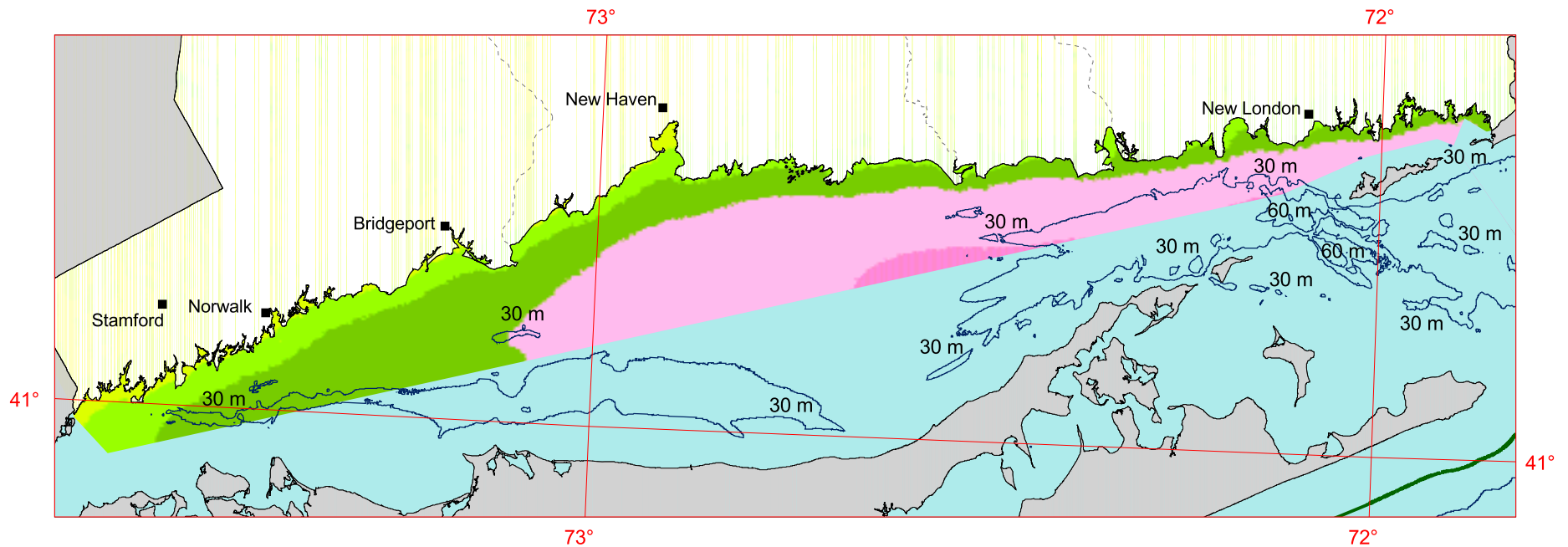


Connecticut - 90 m Offshore Wind Speed



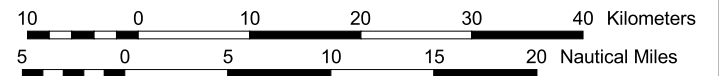
Wind Speed at 90 m		
	m/s	mph
	11.5 - 12.0	25.7 - 26.8
	11.0 - 11.5	24.6 - 25.7
	10.5 - 11.0	23.5 - 24.6
	10.0 - 10.5	22.4 - 23.5
	9.5 - 10.0	21.3 - 22.4
	9.0 - 9.5	20.1 - 21.3
	8.5 - 9.0	19.0 - 20.1
	8.0 - 8.5	17.9 - 19.0
	7.5 - 8.0	16.8 - 17.9
	7.0 - 7.5	15.7 - 16.8
	6.5 - 7.0	14.5 - 15.7
	6.0 - 6.5	13.4 - 14.5
	0.0 - 6.0	0.0 - 13.4

The offshore wind resource data was originally estimated by AWS Truewind as part of an onshore wind mapping project. These data have been interpolated to 90 m and extrapolated to 50 nautical miles by NREL.

Contours

- Water Depth (Meters)
- Distance from Shore (Nautical Miles)

The data for offshore distance from the shore is not available for the Long Island Sound.



U.S. Department of Energy
National Renewable Energy Laboratory