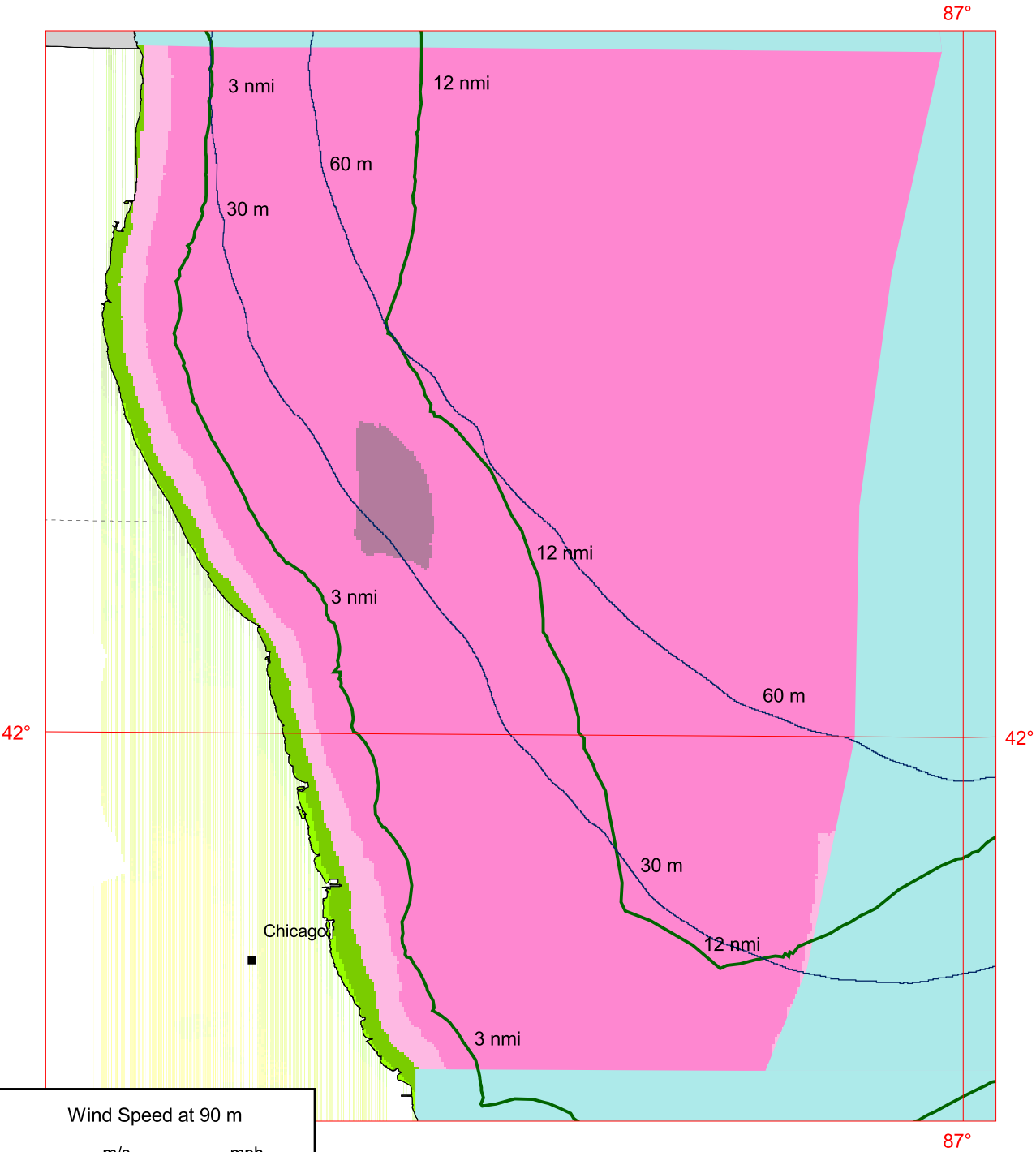


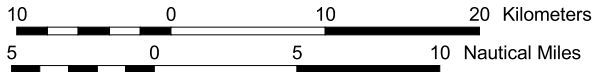
Illinois - 90 m Offshore Wind Speed



Wind Speed at 90 m		
	m/s	mph
	11.5 - 12.0	25.7 - 26.8
	11.0 - 11.5	24.6 - 25.7
	10.5 - 11.0	23.5 - 24.6
	10.0 - 10.5	22.4 - 23.5
	9.5 - 10.0	21.3 - 22.4
	9.0 - 9.5	20.1 - 21.3
	8.5 - 9.0	19.0 - 20.1
	8.0 - 8.5	17.9 - 19.0
	7.5 - 8.0	16.8 - 17.9
	7.0 - 7.5	15.7 - 16.8
	6.5 - 7.0	14.5 - 15.7
	6.0 - 6.5	13.4 - 14.5
	0.0 - 6.0	0.0 - 13.4

Contours

- Water Depth (Meters)
- Distance from Shore (Nautical Miles)



The annual wind speed estimates for this map were produced by AWSTruewind using their Mesomap system and historical weather data.



U.S. Department of Energy
National Renewable Energy Laboratory