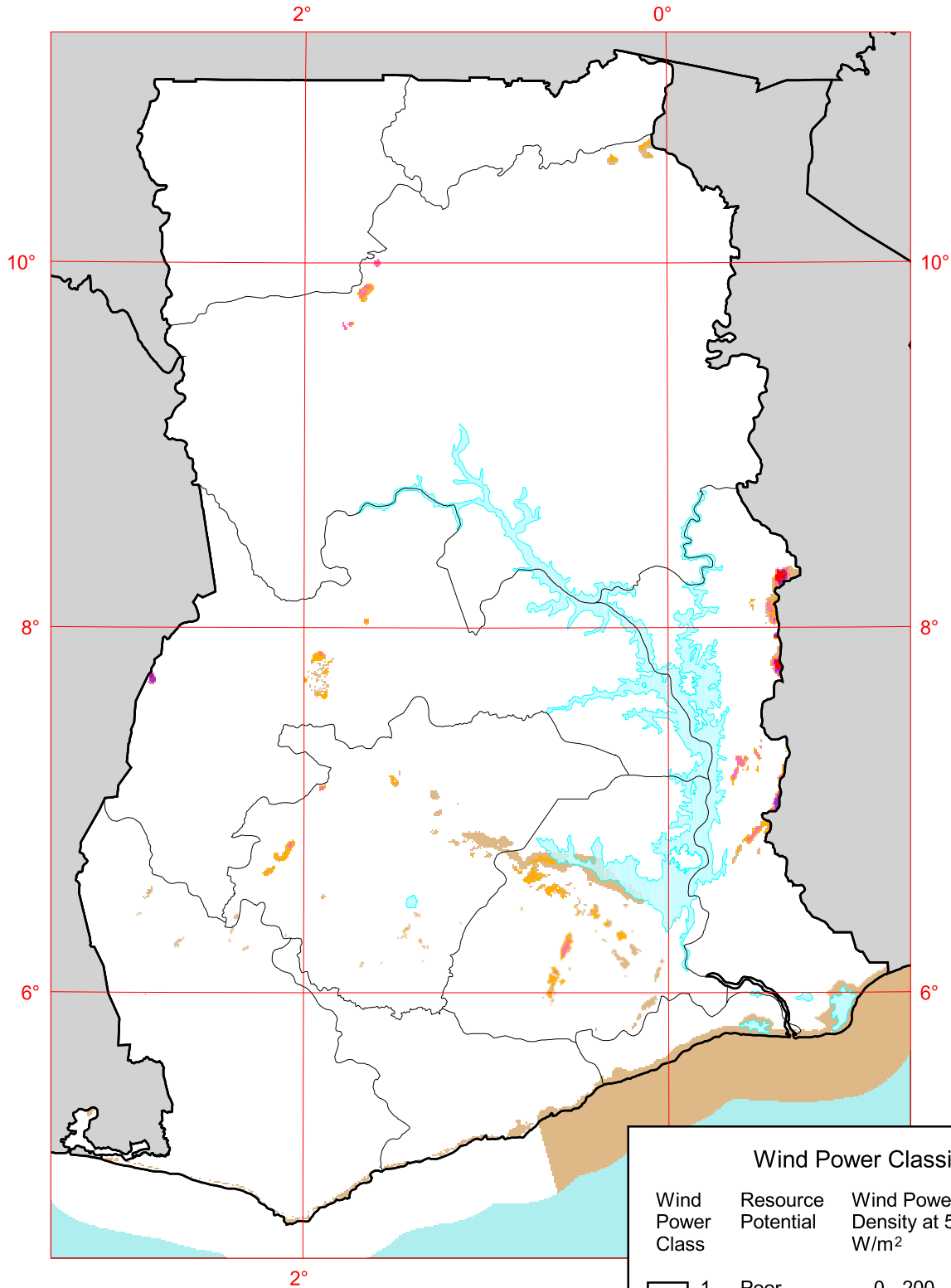


Ghana - 50 m Wind Power



50 0 50 100 150 200 Kilometers



U.S. Department of Energy
National Renewable Energy Laboratory



Solar and Wind
Energy Resource
Assessment



United Nations
Environment
Programme



Global Environment
Facility

Wind Power Classification

| Wind Power Class | Resource Potential | Wind Power Density at 50 m W/m ² | Wind Speed ^a at 50 m m/s |
|------------------|--------------------|---|-------------------------------------|
| 1 | Poor | 0 - 200 | 0 - 6.2 |
| 2 | Marginal | 200 - 300 | 6.2 - 7.1 |
| 3 | Moderate | 300 - 400 | 7.1 - 7.8 |
| 4 | Good | 400 - 500 | 7.8 - 8.4 |
| 5 | Excellent | 500 - 600 | 8.4 - 9.0 |
| 6 | | 600 - 800 | 9.0 - 9.9 |
| 7 | | > 800 | > 9.9 |

^a Wind speeds are based on a Weibull k value of 3.0