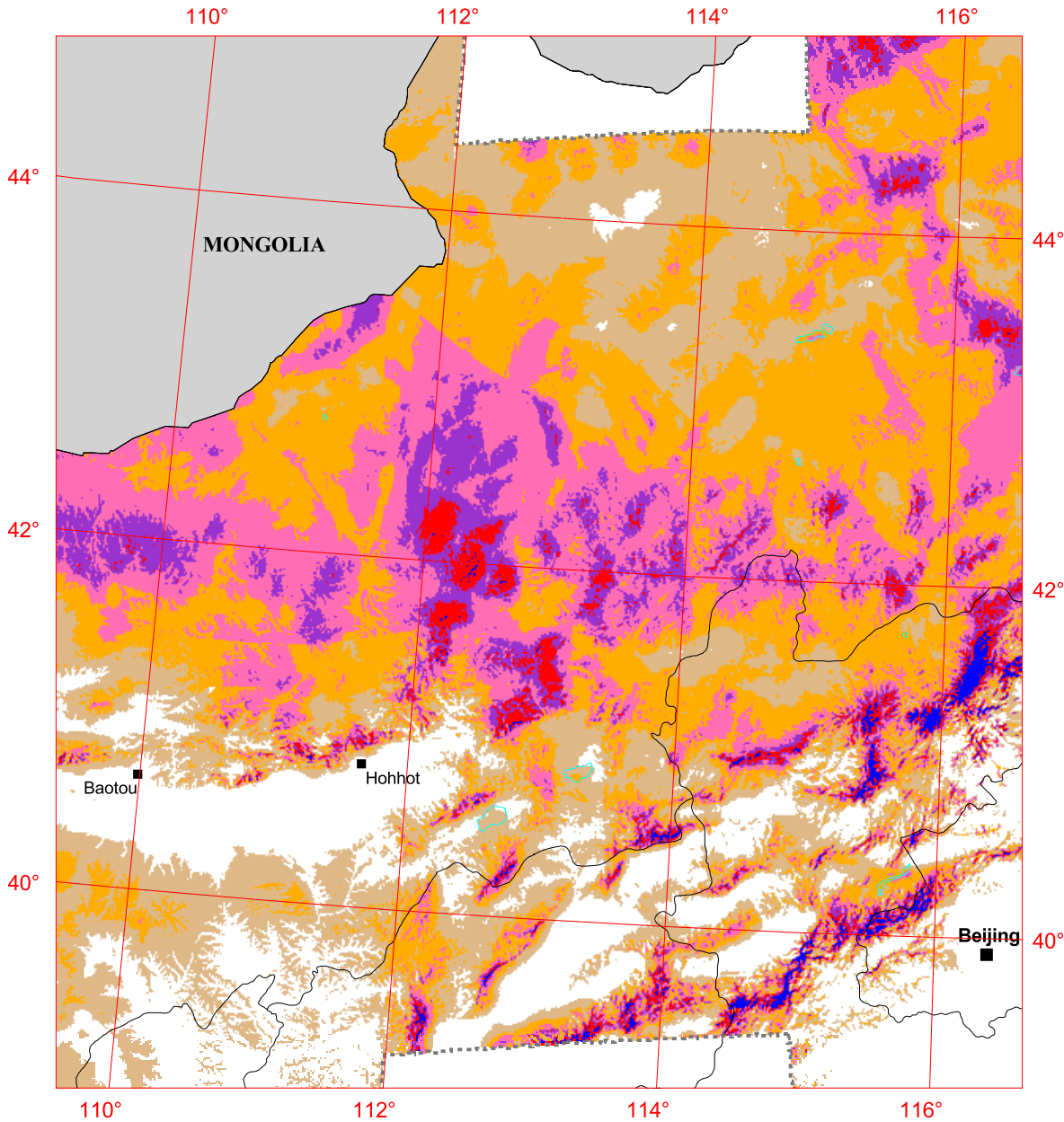


# China - Hohhot - 50 m Wind Power



Solar and Wind  
Energy Resource  
Assessment



United Nations  
Environment  
Programme



Global Environment  
Facility

50 0 50 100 150 200 Kilometers



U.S. Department of Energy  
National Renewable Energy Laboratory

## Wind Power Classification

Wind Power Class	Resource Potential	Wind Power Density at 50 m W/m <sup>2</sup>	Wind Speed <sup>a</sup> at 50 m m/s
1	Poor	0 - 200	0 - 5.6
2	Marginal	200 - 300	5.6 - 6.4
3	Moderate	300 - 400	6.4 - 7.0
4	Good	400 - 500	7.0 - 7.5
5	Excellent	500 - 600	7.5 - 8.0
6		600 - 800	8.0 - 8.8
7		> 800	> 8.8

<sup>a</sup> Wind speeds are based on a Weibull k value of 2.0