

Project:
Pascua Yaqui Tribe

Description:
Data from file(s)
Y:\shared\Anemometer_Loan_Programs\WPA.NA.Loans\Pascua Yaqui - AZ\Pascua Yaqui 040107.N04
Y:\shared\Anemometer_Loan_Programs\WPA.NA.Loans\Pascua Yaqui - AZ\Pascua Yaqui 030528.N03
Y:\shared\Anemometer_Loan_Programs\WPA.NA.Loans\Pascua Yaqui - AZ\Pascua Yaqui 040217.N04
Y:\shared\Anemometer_Loan_Programs\WPA.NA.Loans\Pascua Yaqui - AZ\Pascua Yaqui 030805.N03
Y:\shared\Anemometer_Loan_Programs\WPA.NA.Loans\Pascua Yaqui - AZ\Pascua Yaqui 030710.N03
Y:\shared\Anemometer_Loan_Programs\WPA.NA.Loans\Pascua Yaqui - AZ\Pascua Yaqui 031104.N03
Y:\shared\Anemometer_Loan_Programs\WPA.NA.Loans\Pascua Yaqui - AZ\Pascua Yaqui 031001.N03
Y:\shared\Anemometer_Loan_Programs\WPA.NA.Loans\Pascua Yaqui - AZ\Pascua Yaqui 040401.N04

Printed/Page
01/07/2005 6:17 PM / 1
Licensed user:
National Renewable Energy Laboratory
1617 Cole Blvd. (MS3811)
US-GOLDEN, CO 80401
+1 303-384-7027
Calculated:
01/07/2005 6:16 PM/

Meteo data report, height: 66.0 Feet

Name of meteo object: Pasqua Yaqui

Data from: 05/28/2003 4:30 PM Data to: 07/09/2004 8:50 AM Observations: 54503 Observations per day: 144 Recovery rate: 93%

day	05/03	06/03	07/03	08/03	09/03	10/03	11/03	12/03	01/04	02/04	03/04	04/04	05/04	06/04	07/04
1		144	144	144	144	(47)	144	144	144	144	144	144	144	144	144
2		144	144	144	(69)	144	144	144	144	144	144	144	144	144	144
3		144	144	144	(0)	144	144	144	144	144	144	144	144	144	144
4		144	144	144	(0)	144	144	144	144	144	144	144	144	144	144
5		144	144	144	(0)	144	144	144	144	144	144	144	144	144	144
6		144	144	144	(0)	144	144	144	144	144	144	144	144	144	144
7		144	144	144	(0)	144	144	144	144	144	144	144	144	144	144
8		144	144	144	(0)	144	144	144	144	144	144	144	144	144	144
9		144	144	144	(0)	144	144	144	144	144	144	144	144	144	(54)
10		144	144	144	(0)	144	144	144	144	144	144	144	144	144	
11		144	144	144	(0)	144	144	144	144	144	144	144	144	144	
12		144	144	144	(0)	144	144	144	144	144	144	144	144	144	
13		144	144	144	(0)	144	144	144	144	144	144	144	144	144	
14		144	144	144	(0)	144	144	144	144	144	144	144	144	144	
15		144	144	144	(0)	144	144	144	144	144	144	144	144	144	
16		144	144	144	(0)	144	144	144	144	144	144	144	144	144	
17		144	144	144	(0)	144	144	144	144	144	144	144	144	144	
18		144	144	144	(0)	144	144	144	144	144	144	144	144	144	
19		144	144	144	(0)	144	144	144	144	144	144	144	144	144	
20		144	144	144	(0)	144	144	144	144	144	144	144	144	144	
21		144	144	144	(0)	144	144	144	144	144	144	144	144	144	
22		144	144	144	(0)	144	144	144	144	144	144	144	144	144	
23		144	144	144	(0)	144	144	144	144	144	144	144	144	144	
24		144	144	144	(0)	144	144	144	144	144	144	144	144	144	
25		144	144	144	(0)	144	144	144	144	144	144	144	144	144	
26		144	144	144	(0)	144	144	144	144	144	144	144	144	144	
27		144	144	144	(0)	144	144	144	144	144	144	144	144	144	
28	(45)	144	144	144	(0)	144	144	144	144	144	144	144	144	144	
29	144	144	144	144	(0)	144	144	144	144	144	144	144	144	144	
30	144	144	144	144	(0)	144	144	144	144	144	144	144	144	144	
31	144		144	144		144		144	144		144	144	144		
%	100	100	100	100	(5)	(98)	100	100	100	100	100	100	100	100	(100)

Project:

Pascua Yaqui Tribe

Description:

Data from file(s)

Y:\shared\Anemometer_Loan_Programs\WPA.NA.Loans\Pascua Yaqui - AZ\Pascua Yaqui 040107.N04
 Y:\shared\Anemometer_Loan_Programs\WPA.NA.Loans\Pascua Yaqui - AZ\Pascua Yaqui 030528.N03
 Y:\shared\Anemometer_Loan_Programs\WPA.NA.Loans\Pascua Yaqui - AZ\Pascua Yaqui 040217.N04
 Y:\shared\Anemometer_Loan_Programs\WPA.NA.Loans\Pascua Yaqui - AZ\Pascua Yaqui 030805.N03
 Y:\shared\Anemometer_Loan_Programs\WPA.NA.Loans\Pascua Yaqui - AZ\Pascua Yaqui 030710.N03
 Y:\shared\Anemometer_Loan_Programs\WPA.NA.Loans\Pascua Yaqui - AZ\Pascua Yaqui 031104.N03
 Y:\shared\Anemometer_Loan_Programs\WPA.NA.Loans\Pascua Yaqui - AZ\Pascua Yaqui 031001.N03
 Y:\shared\Anemometer_Loan_Programs\WPA.NA.Loans\Pascua Yaqui - AZ\Pascua Yaqui 040401.N04

Printed/Page

01/07/2005 6:17 PM / 2

Licensed user:

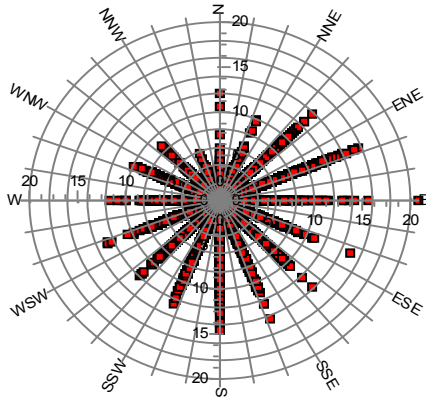
National Renewable Energy Laboratory
 1617 Cole Blvd. (MS3811)
 US-GOLDEN, CO 80401
 +1 303-384-7027

Calculated:

01/07/2005 6:16 PM/

Meteo data report, height: 66.0 Feet

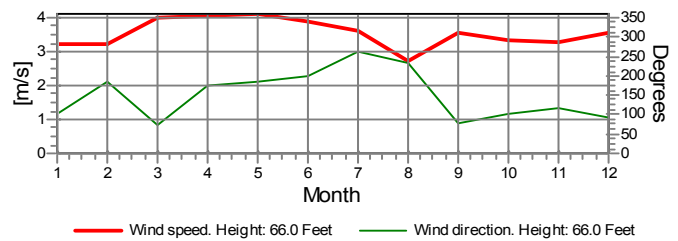
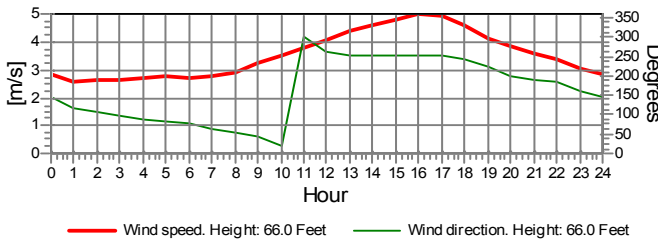
Name of meteo object: Pasqua Yaqui



Monthly mean values of wind speed in m/s

Month	2003	2004	mean	mean of months
Jan		3.2	3.2	3.2
Feb		3.2	3.2	3.2
Mar		4.0	4.0	4.0
Apr		4.0	4.0	4.0
May	3.8	4.1	4.1	4.0
Jun	4.0	3.9	3.9	3.9
Jul	3.6	3.3	3.6	3.5
Aug	2.7		2.7	2.7
Sep	3.5		3.5	3.5
Oct	3.3		3.3	3.3
Nov	3.3		3.3	3.3
Dec	3.5		3.5	3.5
mean, all data	3.4	3.7	3.6	
mean of months	3.5	3.7		3.5

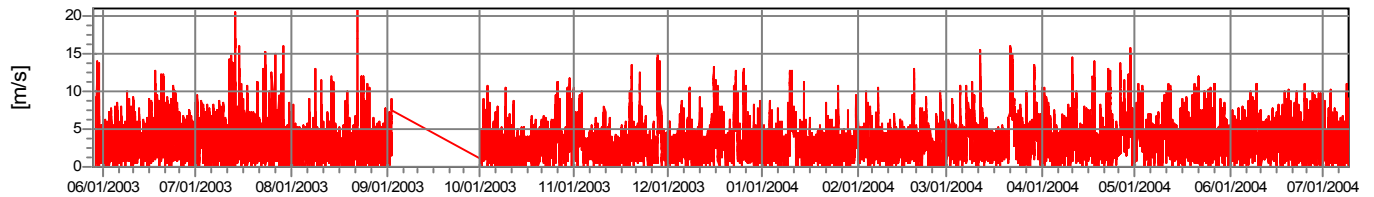
Wind speed [m/s]



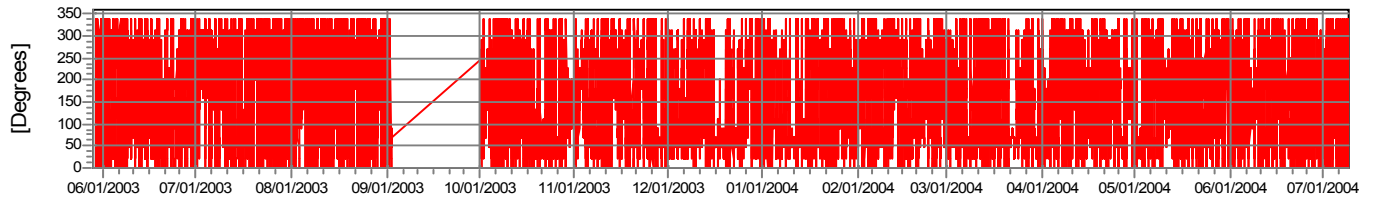
— Wind speed. Height: 66.0 Feet — Wind direction. Height: 66.0 Feet

— Wind speed. Height: 66.0 Feet — Wind direction. Height: 66.0 Feet

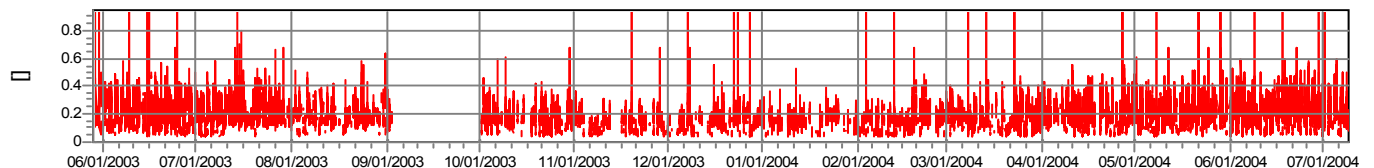
Wind speed



Wind direction



Turbulence intensity V>4.0 m/s



Project:

Pascua Yaqui Tribe

Description:

Data from file(s)
 Y:\shared\Anemometer_Loan_Programs\WPA.NA.Loans\Pascua Yaqui - AZ\Pascua Yaqui 040107.N04
 Y:\shared\Anemometer_Loan_Programs\WPA.NA.Loans\Pascua Yaqui - AZ\Pascua Yaqui 030528.N03
 Y:\shared\Anemometer_Loan_Programs\WPA.NA.Loans\Pascua Yaqui - AZ\Pascua Yaqui 040217.N04
 Y:\shared\Anemometer_Loan_Programs\WPA.NA.Loans\Pascua Yaqui - AZ\Pascua Yaqui 030805.N03
 Y:\shared\Anemometer_Loan_Programs\WPA.NA.Loans\Pascua Yaqui - AZ\Pascua Yaqui 030710.N03
 Y:\shared\Anemometer_Loan_Programs\WPA.NA.Loans\Pascua Yaqui - AZ\Pascua Yaqui 031104.N03
 Y:\shared\Anemometer_Loan_Programs\WPA.NA.Loans\Pascua Yaqui - AZ\Pascua Yaqui 031001.N03
 Y:\shared\Anemometer_Loan_Programs\WPA.NA.Loans\Pascua Yaqui - AZ\Pascua Yaqui 040401.N04

Printed/Page

01/07/2005 6:17 PM / 3

Licensed user:

National Renewable Energy Laboratory
 1617 Cole Blvd. (MS3811)
 US-GOLDEN, CO 80401
 +1 303-384-7027

Calculated:

01/07/2005 6:16 PM/

Meteo data report, height: 66.0 Feet

Name of meteo object: Pasqua Yaqui

Frequency

Wind speed	Sum	N	NNE	NE	ENE	E	ESE	SE	SSE	S	SSW	SW	WSW	W	WNW	NW	NNW
0.00 - 0.49	2,104	115	122	159	177	168	143	154	137	140	164	106	112	87	96	97	127
0.50 - 1.49	6,987	370	570	725	677	570	480	428	383	387	345	295	358	366	372	299	362
1.50 - 2.49	10,226	323	593	1,299	1,411	850	569	554	549	546	531	467	642	754	535	339	264
2.50 - 3.49	11,313	140	375	1,568	1,685	455	379	507	620	805	773	725	1,019	1,164	691	283	124
3.50 - 4.49	8,745	42	171	1,037	1,144	186	229	414	374	575	864	867	990	1,115	543	134	60
4.50 - 5.49	5,623	7	68	633	628	127	180	318	204	304	690	589	654	799	359	52	11
5.50 - 6.49	3,722	4	40	338	511	93	118	232	170	299	500	297	384	471	228	32	5
6.50 - 7.49	2,283	3	12	160	329	72	62	168	138	258	404	182	194	187	88	26	0
7.50 - 8.49	1,448	0	8	82	281	45	27	84	122	219	282	76	71	67	75	8	1
8.50 - 9.49	885	0	7	65	198	32	15	38	110	157	161	35	29	14	17	6	1
9.50 - 10.49	544	1	4	44	139	18	5	21	73	85	86	34	19	10	4	1	0
10.50 - 11.49	289	3	3	20	118	14	8	7	31	36	19	15	8	5	1	1	0
11.50 - 12.49	165	2	0	10	80	9	2	4	18	17	7	6	8	1	1	0	0
12.50 - 13.49	90	0	1	7	42	10	1	3	3	6	7	5	4	1	0	0	0
13.50 - 14.49	49	0	0	3	23	3	2	2	2	8	3	1	0	2	0	0	0
14.50 - 15.49	13	0	1	0	7	0	1	1	0	2	0	0	0	0	0	1	0
15.50 - 16.49	10	0	0	0	4	3	0	1	2	0	0	0	0	0	0	0	0
16.50 - 17.49	2	0	0	0	0	1	1	0	0	0	0	0	0	0	0	0	0
17.50 - 18.49	2	0	0	0	0	1	1	0	0	0	0	0	0	0	0	0	0
18.50 - 19.49	0	0	0	0	0	0	0	0	0	0	0	0	0	0	0	0	0
19.50 - 20.49	2	0	0	0	0	2	0	0	0	0	0	0	0	0	0	0	0
20.50 - 21.49	1	0	0	0	0	1	0	0	0	0	0	0	0	0	0	0	0
Sum	54,503	1,010	1,975	6,150	7,454	2,660	2,223	2,936	2,936	3,844	4,836	3,700	4,492	5,043	3,010	1,279	955

Turbulence

Wind speed	Sum	N	NNE	NE	ENE	E	ESE	SE	SSE	S	SSW	SW	WSW	W	WNW	NW	NNW
0.00 - 0.49	0.000	0.000	0.000	0.000	0.000	0.000	0.000	0.000	0.000	0.000	0.000	0.000	0.000	0.000	0.000	0.000	0.000
0.50 - 1.49	0.000	0.000	0.000	0.000	0.000	0.000	0.000	0.000	0.000	0.000	0.000	0.000	0.000	0.000	0.000	0.000	0.000
1.50 - 2.49	0.000	0.000	0.000	0.000	0.000	0.000	0.000	0.000	0.000	0.000	0.000	0.000	0.000	0.000	0.000	0.000	0.000
2.50 - 3.49	0.000	0.000	0.000	0.000	0.000	0.000	0.000	0.000	0.000	0.000	0.000	0.000	0.000	0.000	0.000	0.000	0.000
3.50 - 4.49	0.168	0.242	0.201	0.158	0.140	0.218	0.186	0.174	0.162	0.128	0.109	0.128	0.208	0.215	0.227	0.196	0.235
4.50 - 5.49	0.178	0.306	0.190	0.151	0.150	0.207	0.193	0.191	0.192	0.180	0.139	0.148	0.207	0.214	0.217	0.213	0.207
5.50 - 6.49	0.196	0.192	0.184	0.153	0.169	0.209	0.183	0.191	0.230	0.221	0.208	0.188	0.203	0.211	0.212	0.201	0.208
6.50 - 7.49	0.188	0.225	0.209	0.153	0.159	0.176	0.167	0.188	0.214	0.207	0.204	0.190	0.186	0.191	0.197	0.209	
7.50 - 8.49	0.180		0.184	0.165	0.162	0.170	0.157	0.175	0.187	0.201	0.192	0.178	0.175	0.173	0.177	0.175	0.146
8.50 - 9.49	0.185		0.177	0.173	0.162	0.158	0.194	0.191	0.195	0.200	0.198	0.194	0.186	0.170	0.186	0.179	0.336
9.50 - 10.49	0.171	0.199	0.187	0.168	0.165	0.154	0.227	0.168	0.173	0.171	0.180	0.177	0.168	0.174	0.175	0.139	
10.50 - 11.49	0.169	0.218	0.174	0.180	0.165	0.150	0.170	0.184	0.179	0.172	0.166	0.168	0.155	0.168	0.349	0.160	
11.50 - 12.49	0.166	0.248		0.146	0.157	0.146	0.174	0.186	0.172	0.196	0.168	0.188	0.176	0.143	0.111		
12.50 - 13.49	0.155		0.252	0.158	0.145	0.139	0.141	0.184	0.157	0.181	0.161	0.166	0.164	0.262			
13.50 - 14.49	0.161			0.140	0.145	0.140	0.272	0.169	0.207	0.167	0.157	0.151	0.226				
14.50 - 15.49	0.174		0.143		0.140		0.207	0.202		0.161					0.401		
15.50 - 16.49	0.170				0.134	0.233		0.146	0.160								
16.50 - 17.49	0.211					0.240	0.181										
17.50 - 18.49	0.228					0.162	0.293										
18.50 - 19.49																	
19.50 - 20.49	0.156					0.156											
20.50 - 21.49	0.157					0.157											
Sum	0.181	0.245	0.193	0.156	0.156	0.192	0.185	0.186	0.194	0.188	0.169	0.158	0.202	0.210	0.213	0.203	0.223

Project:

Pascua Yaqui Tribe

Description:

Data from file(s)

Y:\shared\Anemometer_Loan_Programs\WPA.NA.Loans\Pascua Yaqui - AZ\Pascua Yaqui 040107.N04
 Y:\shared\Anemometer_Loan_Programs\WPA.NA.Loans\Pascua Yaqui - AZ\Pascua Yaqui 030528.N03
 Y:\shared\Anemometer_Loan_Programs\WPA.NA.Loans\Pascua Yaqui - AZ\Pascua Yaqui 040217.N04
 Y:\shared\Anemometer_Loan_Programs\WPA.NA.Loans\Pascua Yaqui - AZ\Pascua Yaqui 030805.N03
 Y:\shared\Anemometer_Loan_Programs\WPA.NA.Loans\Pascua Yaqui - AZ\Pascua Yaqui 030710.N03
 Y:\shared\Anemometer_Loan_Programs\WPA.NA.Loans\Pascua Yaqui - AZ\Pascua Yaqui 031104.N03
 Y:\shared\Anemometer_Loan_Programs\WPA.NA.Loans\Pascua Yaqui - AZ\Pascua Yaqui 031001.N03
 Y:\shared\Anemometer_Loan_Programs\WPA.NA.Loans\Pascua Yaqui - AZ\Pascua Yaqui 040401.N04

Printed/Page

01/07/2005 6:17 PM / 4

Licensed user:

National Renewable Energy Laboratory
 1617 Cole Blvd. (MS3811)
 US-GOLDEN, CO 80401
 +1 303-384-7027

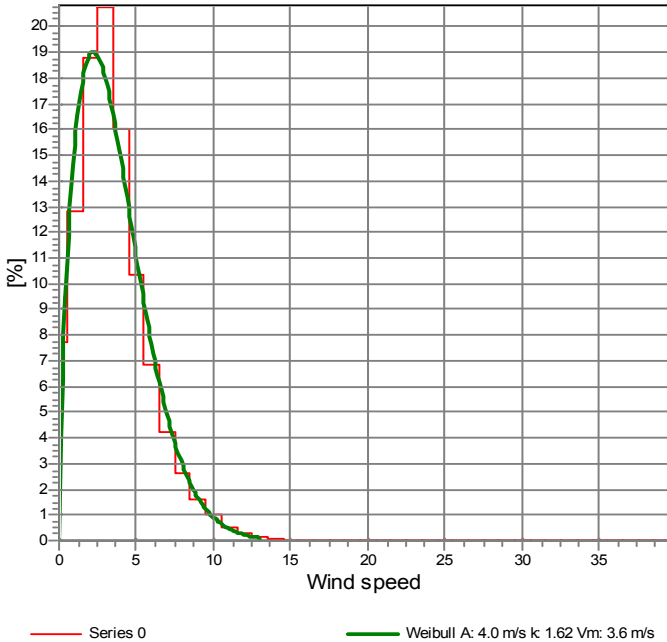
Calculated:

01/07/2005 6:16 PM/

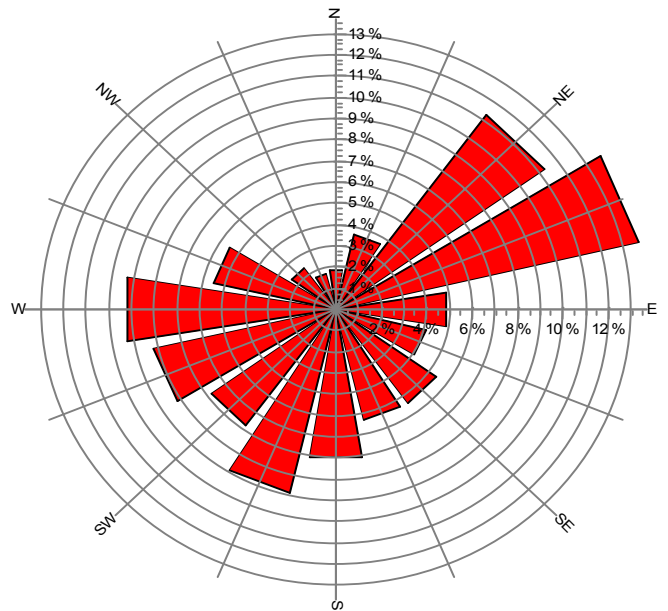
Meteo data report, height: 66.0 Feet

Name of meteo object: Pasqua Yaqui

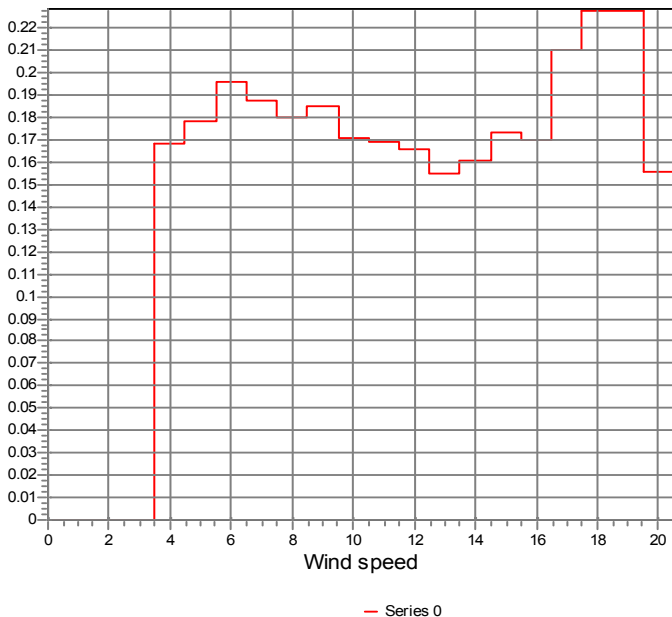
Frequency



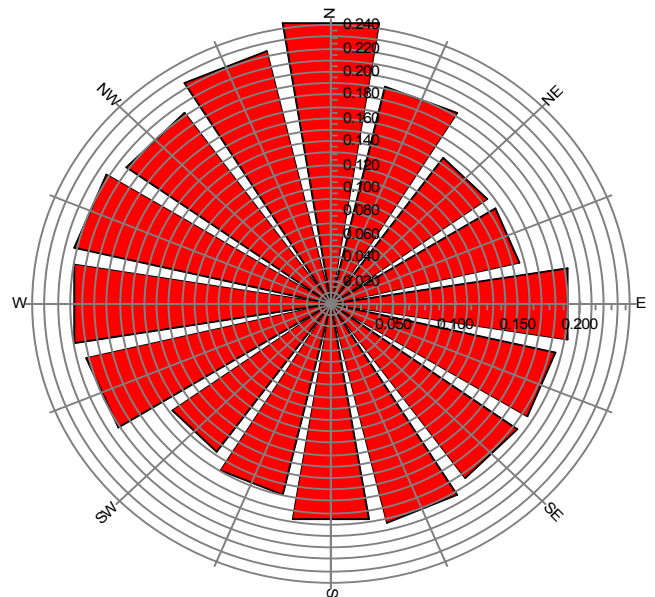
Frequency



Turbulence
V>4.0 m/s



Turbulence
V>4.0 m/s



Project:

Pascua Yaqui Tribe

Description:

Data from file(s)

Y:\shared\Anemometer_Loan_Programs\WPA.NA.Loans\Pascua Yaqui - AZ\Pascua Yaqui 040107.N04
 Y:\shared\Anemometer_Loan_Programs\WPA.NA.Loans\Pascua Yaqui - AZ\Pascua Yaqui 030528.N03
 Y:\shared\Anemometer_Loan_Programs\WPA.NA.Loans\Pascua Yaqui - AZ\Pascua Yaqui 040217.N04
 Y:\shared\Anemometer_Loan_Programs\WPA.NA.Loans\Pascua Yaqui - AZ\Pascua Yaqui 030805.N03
 Y:\shared\Anemometer_Loan_Programs\WPA.NA.Loans\Pascua Yaqui - AZ\Pascua Yaqui 030710.N03
 Y:\shared\Anemometer_Loan_Programs\WPA.NA.Loans\Pascua Yaqui - AZ\Pascua Yaqui 031104.N03
 Y:\shared\Anemometer_Loan_Programs\WPA.NA.Loans\Pascua Yaqui - AZ\Pascua Yaqui 031001.N03
 Y:\shared\Anemometer_Loan_Programs\WPA.NA.Loans\Pascua Yaqui - AZ\Pascua Yaqui 040401.N04

Printed/Page

01/07/2005 6:17 PM / 5

Licensed user:

National Renewable Energy Laboratory
 1617 Cole Blvd. (MS3811)
 US-GOLDEN, CO 80401
 +1 303-384-7027

Calculated:

01/07/2005 6:16 PM/

Meteo data report, height: 66.0 Feet

Name of meteo object: Pasqua Yaqui

Weibull Data

k-parameter correction: 0.0080/m

Sector	A- parameter [m/s]	Mean wind speed [m/s]	k- parameter	Frequency	Frequency [%]	Wind shear
0-N	2.18	1.97	1.511	1.85	1.9	0.00
1-NNE	2.65	2.38	1.534	3.62	3.6	0.00
2-NE	3.78	3.37	1.726	11.28	11.3	0.00
3-ENE	4.34	3.94	1.421	13.68	13.7	0.00
4-E	2.98	2.84	1.141	4.88	4.9	0.00
5-ESE	3.23	2.94	1.428	4.08	4.1	0.00
6-SE	4.05	3.62	1.692	5.39	5.4	0.00
7-SSE	4.11	3.74	1.404	5.39	5.4	0.00
8-S	4.60	4.13	1.576	7.05	7.1	0.00
9-SSW	5.06	4.48	2.019	8.87	8.9	0.00
10-SW	4.50	3.99	2.131	6.79	6.8	0.00
11-WSW	4.29	3.80	2.167	8.24	8.2	0.00
12-W	4.26	3.77	2.365	9.25	9.3	0.00
13-WNW	3.91	3.47	1.998	5.52	5.5	0.00
14-NW	2.92	2.61	1.617	2.35	2.3	0.00
15-NNW	2.03	1.82	1.673	1.75	1.8	0.00
mean	4.02	3.60	1.616	100.00	100.0	0.00

