

Project: **Beresford**  
 Description: Data from file(s)  
 Y:\5000\shared\Anemometer\_Loan\_Programs\WAPA Loans\SD - City of Beresford - SD\Wind Data\Beresford 051201.csv  
 Y:\5000\shared\Anemometer\_Loan\_Programs\WAPA Loans\SD - City of Beresford - SD\Wind Data\Beresford 060102.csv  
 Y:\5000\shared\Anemometer\_Loan\_Programs\WAPA Loans\SD - City of Beresford - SD\Wind Data\Beresford 060131.csv  
 Y:\5000\shared\Anemometer\_Loan\_Programs\WAPA Loans\SD - City of Beresford - SD\Wind Data\Beresford 060301.csv  
 Y:\5000\shared\Anemometer\_Loan\_Programs\WAPA Loans\SD - City of Beresford - SD\Wind Data\Beresford 060402.csv  
 Y:\5000\shared\Anemometer\_Loan\_Programs\WAPA Loans\SD - City of Beresford - SD\Wind Data\Beresford 060501.csv  
 Y:\5000\shared\Anemometer\_Loan\_Programs\WAPA Loans\SD - City of Beresford - SD\Wind Data\Beresford 060601.csv  
 Y:\5000\shared\Anemometer\_Loan\_Programs\WAPA Loans\SD - City of Beresford - SD\Wind Data\Beresford 060710.csv  
 Y:\5000\shared\Anemometer\_Loan\_Programs\WAPA Loans\SD - City of Beresford - SD\Wind Data\Beresford 060731.csv  
 Y:\5000\shared\Anemometer\_Loan\_Programs\WAPA Loans\SD - City of Beresford - SD\Wind Data\Beresford 060830.csv  
 Y:\5000\shared\Anemometer\_Loan\_Programs\WAPA Loans\SD - City of Beresford - SD\Wind Data\Beresford 061005.csv  
 Y:\5000\shared\Anemometer\_Loan\_Programs\WAPA Loans\SD - City of Beresford - SD\Wind Data\Beresford 061101.csv  
 Y:\5000\shared\Anemometer\_Loan\_Programs\WAPA Loans\SD - City of Beresford - SD\Wind Data\Beresford 061203.csv

Printed/Page  
 02/08/2007 11:27 AM / 1  
 Licensed user:  
**National Renewable Energy Laboratory**  
 1617 Cole Blvd. (MS3811)  
 US-GOLDEN, CO 80401  
 +1 303-384-7027  
 Calculated:  
 02/08/2007 11:27 AM/

**Meteo data report, height: 20.0 m**

Name of meteo object: Beresford

Data from: 12/01/2005 4:40 PM Data to: 01/01/2007 10:00 PM Observations: 57123 Observations per day: 144 Recovery rate: 100%

day	12/05	01/06	02/06	03/06	04/06	05/06	06/06	07/06	08/06	09/06	10/06	11/06	12/06	01/07
1	(44)	144	(201)	144	144	(143)	(133)	(130)	144	(137)	(143)	144	144	(133)
2	144	(135)	144	144	144	144	144	(143)	(132)	144	144	(132)	144	
3	(143)	(111)	144	144	144	144	144	144	(142)	(143)	144	144		
4	144	144	(143)	144	144	144	144	(130)	144	(130)	(143)	144	144	
5	144	144	(142)	144	144	144	144	144	(142)	(116)	144	144	144	
6	144	(139)	144	144	144	144	144	144	144	144	144	144	144	
7	(140)	(136)	144	144	144	144	(142)	144	144	144	144	144	144	
8	(136)	144	144	(127)	144	(141)	144	(143)	144	144	(143)	144	144	
9	144	144	144	144	144	144	144	144	144	144	144	144	144	144
10	144	144	144	144	144	144	144	(143)	144	144	144	(141)	(135)	
11	144	144	144	144	144	144	144	(142)	144	(137)	144	144	144	
12	144	144	144	144	144	144	144	(143)	144	(138)	144	144	144	
13	144	(140)	144	144	(138)	144	144	144	144	144	144	144	144	
14	144	144	144	(141)	(143)	144	144	144	(139)	144	144	144	(140)	
15	144	144	144	144	144	144	144	144	144	144	144	(134)	144	
16	144	144	144	144	144	144	144	(142)	144	144	144	144	144	144
17	144	144	144	144	144	144	(138)	144	144	144	144	144	144	(143)
18	144	144	144	144	144	144	144	144	(143)	144	144	144	144	
19	144	144	144	144	144	144	144	144	(142)	144	144	144	(141)	
20	(142)	(138)	144	144	144	144	144	144	144	144	144	144	144	144
21	(143)	144	144	(140)	(139)	144	(136)	(139)	(140)	144	144	144	144	
22	(139)	(140)	144	144	144	144	(140)	144	144	144	144	144	144	
23	(143)	144	144	144	144	144	(143)	144	144	144	144	144	144	
24	144	144	144	144	144	144	144	(142)	144	144	144	144	(140)	144
25	(139)	144	144	144	144	144	144	(142)	(136)	(125)	144	(141)	144	
26	(142)	144	144	144	144	144	(128)	144	144	144	(143)	(63)	144	
27	(67)	144	144	(140)	144	144	(140)	144	(142)	144	144	(87)	144	
28	(143)	(142)	144	144	144	144	144	144	144	144	144	144	144	144
29	(92)	144		144	144	144	144	144	144	144	144	144	144	
30	144	(141)		144	144	144	144	144	(141)	144	144	144	144	
31	(141)	(159)		144		(140)		(138)	144		144		144	
%	(96)	(99)	(101)	(99)	(100)	(100)	(99)	(99)	(99)	(98)	(100)	(96)	(100)	(101)

Project: **Beresford**  
 Description:  
 Data from file(s)  
 Y:\15000\shared\Anemometer\_Loan\_Programs\WAPA Loans\SD - City of Beresford - SD\Wind Data\Beresford 051201.csv  
 Y:\15000\shared\Anemometer\_Loan\_Programs\WAPA Loans\SD - City of Beresford - SD\Wind Data\Beresford 060102.csv  
 Y:\15000\shared\Anemometer\_Loan\_Programs\WAPA Loans\SD - City of Beresford - SD\Wind Data\Beresford 060131.csv  
 Y:\15000\shared\Anemometer\_Loan\_Programs\WAPA Loans\SD - City of Beresford - SD\Wind Data\Beresford 060301.csv  
 Y:\15000\shared\Anemometer\_Loan\_Programs\WAPA Loans\SD - City of Beresford - SD\Wind Data\Beresford 060402.csv  
 Y:\15000\shared\Anemometer\_Loan\_Programs\WAPA Loans\SD - City of Beresford - SD\Wind Data\Beresford 060501.csv  
 Y:\15000\shared\Anemometer\_Loan\_Programs\WAPA Loans\SD - City of Beresford - SD\Wind Data\Beresford 060601.csv  
 Y:\15000\shared\Anemometer\_Loan\_Programs\WAPA Loans\SD - City of Beresford - SD\Wind Data\Beresford 060710.csv  
 Y:\15000\shared\Anemometer\_Loan\_Programs\WAPA Loans\SD - City of Beresford - SD\Wind Data\Beresford 060731.csv  
 Y:\15000\shared\Anemometer\_Loan\_Programs\WAPA Loans\SD - City of Beresford - SD\Wind Data\Beresford 060830.csv  
 Y:\15000\shared\Anemometer\_Loan\_Programs\WAPA Loans\SD - City of Beresford - SD\Wind Data\Beresford 061005.csv  
 Y:\15000\shared\Anemometer\_Loan\_Programs\WAPA Loans\SD - City of Beresford - SD\Wind Data\Beresford 061101.csv  
 Y:\15000\shared\Anemometer\_Loan\_Programs\WAPA Loans\SD - City of Beresford - SD\Wind Data\Beresford 061203.csv

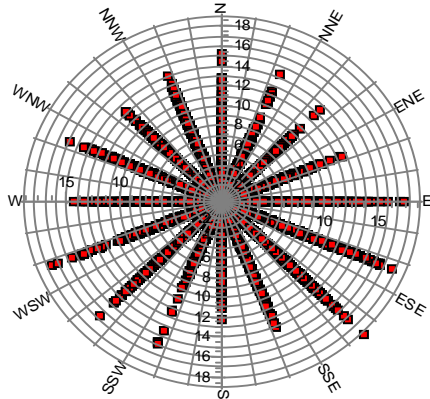
Printed/Page  
 02/08/2007 11:27 AM / 2

Licensed user:  
**National Renewable Energy Laboratory**  
 1617 Cole Blvd. (MS3811)  
 US-GOLDEN, CO 80401  
 +1 303-384-7027

Calculated:  
 02/08/2007 11:27 AM/

**Meteo data report, height: 20.0 m**

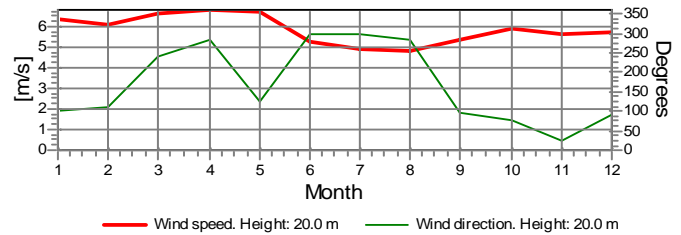
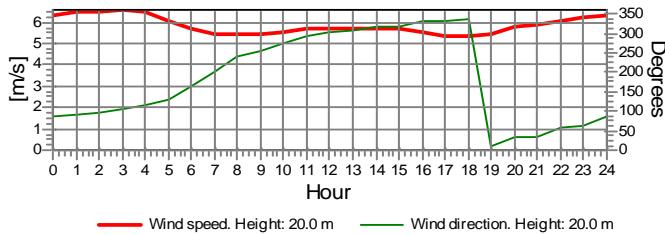
Name of meteo object: Beresford



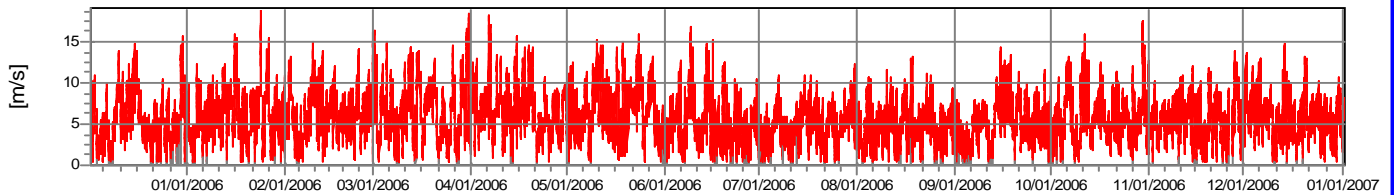
**Monthly mean values of wind speed in m/s**

Month	2005	2006	2007	mean	mean of months
Jan		6.4	5.0	6.3	5.7
Feb		6.1		6.1	6.1
Mar		6.7		6.7	6.7
Apr		6.8		6.8	6.8
May		6.8		6.8	6.8
Jun		5.2		5.2	5.2
Jul		5.0		5.0	5.0
Aug		4.8		4.8	4.8
Sep		5.3		5.3	5.3
Oct		5.9		5.9	5.9
Nov		5.6		5.6	5.6
Dec		5.8		5.7	5.7
mean, all data	5.6	5.9	5.0	5.8	
mean of months	5.6	5.9	5.0		5.8

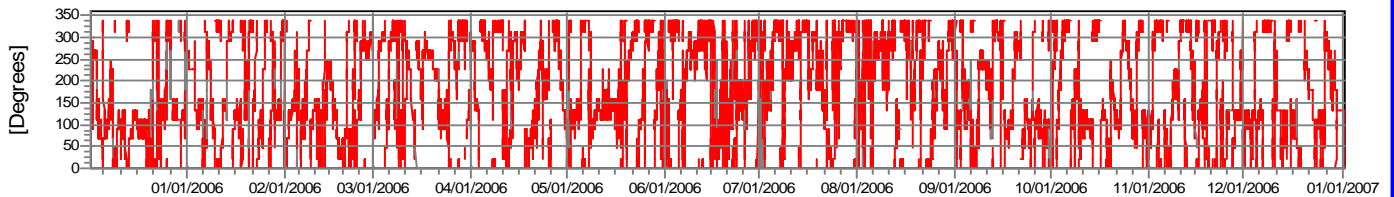
Wind speed [m/s]



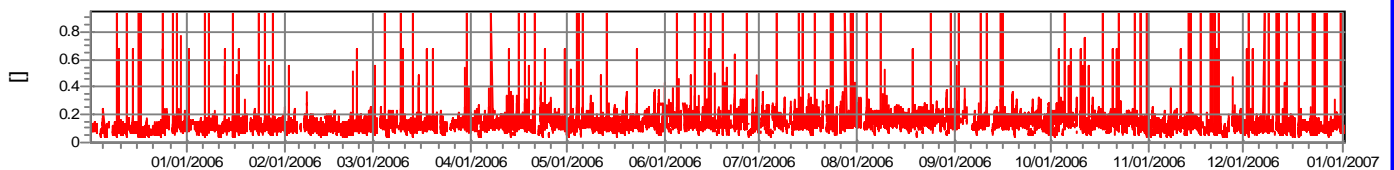
Wind speed



Wind direction



Turbulence intensity  
 V > 4.00 m/s



Project: **Beresford**  
 Description: Data from file(s)  
 Y:\5000\shared\Anemometer\_Loan\_Programs\WAPA Loans\SD - City of Beresford - SD\Wind Data\Beresford 051201.csv  
 Y:\5000\shared\Anemometer\_Loan\_Programs\WAPA Loans\SD - City of Beresford - SD\Wind Data\Beresford 060102.csv  
 Y:\5000\shared\Anemometer\_Loan\_Programs\WAPA Loans\SD - City of Beresford - SD\Wind Data\Beresford 060131.csv  
 Y:\5000\shared\Anemometer\_Loan\_Programs\WAPA Loans\SD - City of Beresford - SD\Wind Data\Beresford 060301.csv  
 Y:\5000\shared\Anemometer\_Loan\_Programs\WAPA Loans\SD - City of Beresford - SD\Wind Data\Beresford 060402.csv  
 Y:\5000\shared\Anemometer\_Loan\_Programs\WAPA Loans\SD - City of Beresford - SD\Wind Data\Beresford 060501.csv  
 Y:\5000\shared\Anemometer\_Loan\_Programs\WAPA Loans\SD - City of Beresford - SD\Wind Data\Beresford 060601.csv  
 Y:\5000\shared\Anemometer\_Loan\_Programs\WAPA Loans\SD - City of Beresford - SD\Wind Data\Beresford 060710.csv  
 Y:\5000\shared\Anemometer\_Loan\_Programs\WAPA Loans\SD - City of Beresford - SD\Wind Data\Beresford 060731.csv  
 Y:\5000\shared\Anemometer\_Loan\_Programs\WAPA Loans\SD - City of Beresford - SD\Wind Data\Beresford 060830.csv  
 Y:\5000\shared\Anemometer\_Loan\_Programs\WAPA Loans\SD - City of Beresford - SD\Wind Data\Beresford 061005.csv  
 Y:\5000\shared\Anemometer\_Loan\_Programs\WAPA Loans\SD - City of Beresford - SD\Wind Data\Beresford 061101.csv  
 Y:\5000\shared\Anemometer\_Loan\_Programs\WAPA Loans\SD - City of Beresford - SD\Wind Data\Beresford 061203.csv

Printed/Page: 02/08/2007 11:27 AM / 3  
 Licensed user: **National Renewable Energy Laboratory**  
 1617 Cole Blvd. (MS3811)  
 US-GOLDEN, CO 80401  
 +1 303-384-7027  
 Calculated: 02/08/2007 11:27 AM/

**Meteo data report, height: 20.0 m**

Name of meteo object: Beresford

**Frequency**

Wind speed	Sum	N	NNE	NE	ENE	E	ESE	SE	SSE	S	SSW	SW	WSW	W	WNW	NW	NNW
0.00 - 0.49	185	6	7	6	14	12	17	23	17	19	16	15	5	8	9	4	7
0.50 - 1.49	1,788	57	56	77	76	138	216	223	147	166	174	151	78	71	60	55	43
1.50 - 2.49	3,588	125	134	160	198	350	481	312	220	219	339	331	189	161	149	106	114
2.50 - 3.49	6,196	258	285	306	373	492	716	506	322	351	456	486	382	364	312	289	298
3.50 - 4.49	7,478	390	458	391	414	496	821	737	312	382	396	386	386	515	487	467	440
4.50 - 5.49	8,183	544	452	264	301	407	770	827	269	379	312	313	378	539	766	933	729
5.50 - 6.49	8,358	555	411	171	221	381	738	868	270	279	218	279	304	496	914	1,229	1,024
6.50 - 7.49	6,392	403	174	121	124	290	609	628	235	148	102	161	211	411	795	1,001	979
7.50 - 8.49	4,892	200	68	68	86	184	540	601	231	127	80	105	168	457	513	726	738
8.50 - 9.49	3,492	126	21	48	69	154	493	566	195	116	17	117	167	291	292	388	432
9.50 - 10.49	2,238	81	12	15	43	140	450	325	120	73	10	97	101	133	188	179	271
10.50 - 11.49	1,560	54	13	6	12	127	397	310	73	14	12	74	34	81	107	70	176
11.50 - 12.49	932	39	16	3	6	84	226	200	46	1	8	66	17	37	60	26	97
12.50 - 13.49	572	18	3	4	3	47	140	109	28	1	0	39	48	26	42	19	45
13.50 - 14.49	301	4	5	5	1	36	81	58	8	0	5	19	43	11	15	4	6
14.50 - 15.49	142	1	0	3	0	17	45	25	2	0	6	16	18	2	7	0	0
15.50 - 16.49	73	1	0	0	0	6	32	15	0	0	8	1	8	0	2	0	0
16.50 - 17.49	41	0	0	0	0	5	18	11	0	0	2	4	1	0	0	0	0
17.50 - 18.49	13	0	0	0	0	1	8	0	0	0	0	0	4	0	0	0	0
18.50 - 19.49	1	0	0	0	0	0	0	1	0	0	0	0	0	0	0	0	0
Sum	56,425	2,862	2,115	1,648	1,941	3,367	6,798	6,345	2,495	2,275	2,161	2,660	2,542	3,603	4,718	5,496	5,399

**Turbulence**

Wind speed	Sum	N	NNE	NE	ENE	E	ESE	SE	SSE	S	SSW	SW	WSW	W	WNW	NW	NNW
0.00 - 0.49	0.000	0.000	0.000	0.000	0.000	0.000	0.000	0.000	0.000	0.000	0.000	0.000	0.000	0.000	0.000	0.000	0.000
0.50 - 1.49	0.000	0.000	0.000	0.000	0.000	0.000	0.000	0.000	0.000	0.000	0.000	0.000	0.000	0.000	0.000	0.000	0.000
1.50 - 2.49	0.000	0.000	0.000	0.000	0.000	0.000	0.000	0.000	0.000	0.000	0.000	0.000	0.000	0.000	0.000	0.000	0.000
2.50 - 3.49	0.000	0.000	0.000	0.000	0.000	0.000	0.000	0.000	0.000	0.000	0.000	0.000	0.000	0.000	0.000	0.000	0.000
3.50 - 4.49	0.131	0.116	0.107	0.114	0.107	0.111	0.117	0.130	0.158	0.176	0.176	0.144	0.129	0.126	0.139	0.144	0.140
4.50 - 5.49	0.127	0.115	0.109	0.110	0.100	0.099	0.126	0.129	0.149	0.158	0.169	0.132	0.123	0.121	0.130	0.136	0.130
5.50 - 6.49	0.135	0.133	0.119	0.124	0.107	0.114	0.134	0.137	0.143	0.149	0.164	0.147	0.137	0.117	0.132	0.140	0.146
6.50 - 7.49	0.129	0.131	0.128	0.117	0.111	0.108	0.125	0.131	0.133	0.148	0.161	0.126	0.127	0.122	0.126	0.134	0.133
7.50 - 8.49	0.130	0.138	0.139	0.129	0.111	0.112	0.121	0.133	0.138	0.154	0.154	0.118	0.124	0.123	0.130	0.132	0.135
8.50 - 9.49	0.134	0.144	0.144	0.129	0.122	0.114	0.126	0.134	0.132	0.156	0.153	0.122	0.132	0.123	0.131	0.146	0.146
9.50 - 10.49	0.130	0.145	0.143	0.134	0.122	0.123	0.120	0.128	0.129	0.143	0.166	0.116	0.124	0.121	0.131	0.142	0.150
10.50 - 11.49	0.132	0.169	0.146	0.129	0.120	0.125	0.120	0.133	0.129	0.150	0.146	0.117	0.122	0.122	0.135	0.149	0.152
11.50 - 12.49	0.130	0.153	0.150	0.132	0.138	0.118	0.116	0.132	0.137	0.140	0.129	0.111	0.128	0.125	0.137	0.165	0.155
12.50 - 13.49	0.128	0.150	0.131	0.151	0.145	0.110	0.114	0.134	0.135	0.177		0.108	0.134	0.120	0.137	0.164	0.149
13.50 - 14.49	0.128	0.159	0.132	0.139	0.113	0.121	0.112	0.133	0.139		0.154	0.111	0.128	0.151	0.146	0.159	0.198
14.50 - 15.49	0.126	0.189		0.123		0.114	0.123	0.121	0.102		0.145	0.127	0.135	0.124	0.154		
15.50 - 16.49	0.128	0.156				0.112	0.130	0.120			0.132	0.103	0.136		0.161		
16.50 - 17.49	0.125					0.114	0.124	0.133			0.135	0.118	0.139				
17.50 - 18.49	0.119					0.096	0.123						0.115				
18.50 - 19.49	0.119							0.119									
Sum	0.131	0.129	0.117	0.118	0.108	0.111	0.124	0.132	0.140	0.156	0.166	0.130	0.128	0.122	0.131	0.138	0.140

Project: **Beresford**

Description:  
 Data from file(s)  
 Y:\15000\shared\Anemometer\_Loan\_Programs\WAPA Loans\SD - City of Beresford - SD\Wind Data\Beresford 051201.csv  
 Y:\15000\shared\Anemometer\_Loan\_Programs\WAPA Loans\SD - City of Beresford - SD\Wind Data\Beresford 060102.csv  
 Y:\15000\shared\Anemometer\_Loan\_Programs\WAPA Loans\SD - City of Beresford - SD\Wind Data\Beresford 060131.csv  
 Y:\15000\shared\Anemometer\_Loan\_Programs\WAPA Loans\SD - City of Beresford - SD\Wind Data\Beresford 060301.csv  
 Y:\15000\shared\Anemometer\_Loan\_Programs\WAPA Loans\SD - City of Beresford - SD\Wind Data\Beresford 060402.csv  
 Y:\15000\shared\Anemometer\_Loan\_Programs\WAPA Loans\SD - City of Beresford - SD\Wind Data\Beresford 060501.csv  
 Y:\15000\shared\Anemometer\_Loan\_Programs\WAPA Loans\SD - City of Beresford - SD\Wind Data\Beresford 060601.csv  
 Y:\15000\shared\Anemometer\_Loan\_Programs\WAPA Loans\SD - City of Beresford - SD\Wind Data\Beresford 060710.csv  
 Y:\15000\shared\Anemometer\_Loan\_Programs\WAPA Loans\SD - City of Beresford - SD\Wind Data\Beresford 060731.csv  
 Y:\15000\shared\Anemometer\_Loan\_Programs\WAPA Loans\SD - City of Beresford - SD\Wind Data\Beresford 060830.csv  
 Y:\15000\shared\Anemometer\_Loan\_Programs\WAPA Loans\SD - City of Beresford - SD\Wind Data\Beresford 061005.csv  
 Y:\15000\shared\Anemometer\_Loan\_Programs\WAPA Loans\SD - City of Beresford - SD\Wind Data\Beresford 061101.csv  
 Y:\15000\shared\Anemometer\_Loan\_Programs\WAPA Loans\SD - City of Beresford - SD\Wind Data\Beresford 061203.csv

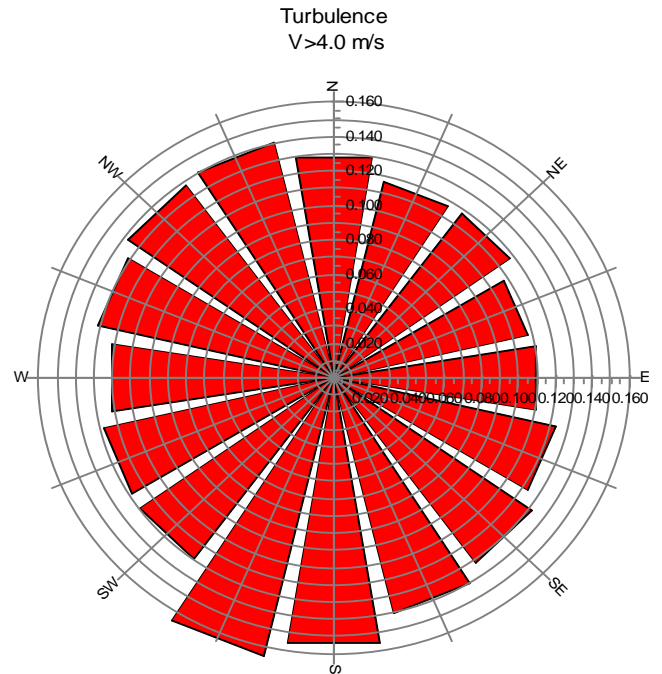
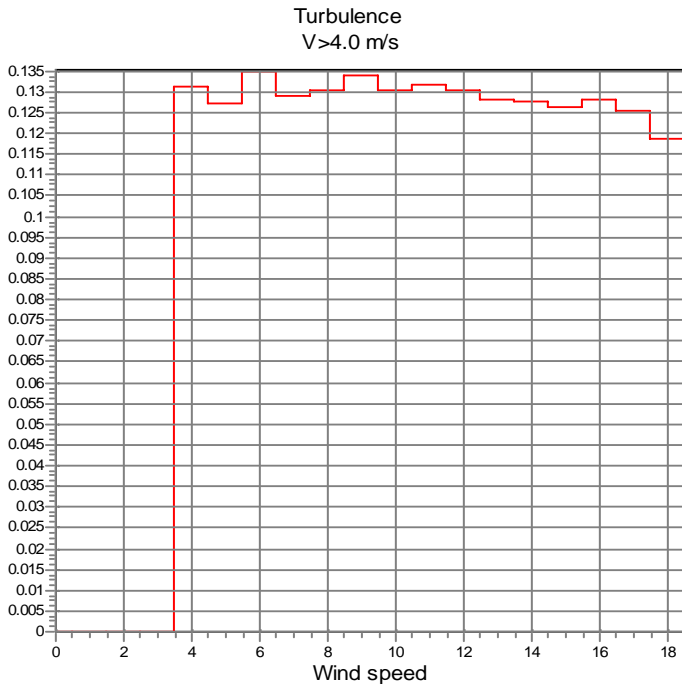
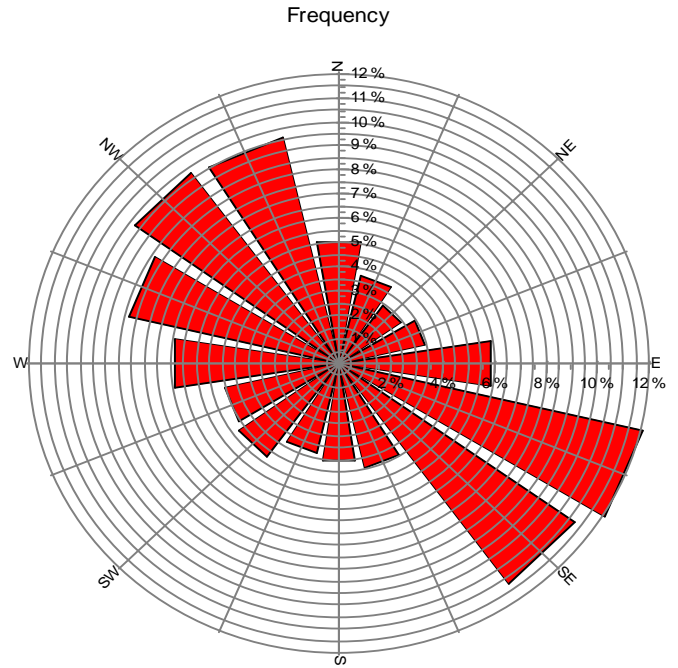
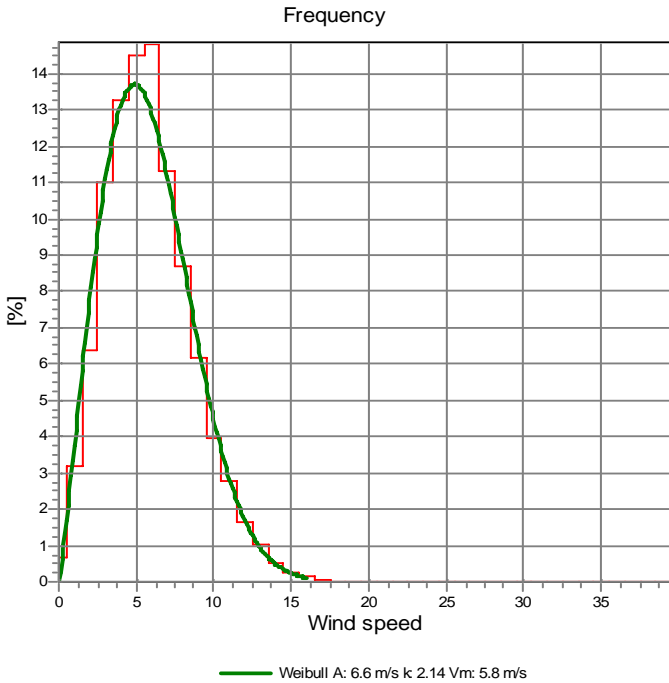
Printed/Page  
 02/08/2007 11:27 AM / 4

Licensed user:  
**National Renewable Energy Laboratory**  
 1617 Cole Blvd. (MS3811)  
 US-GOLDEN, CO 80401  
 +1 303-384-7027

Calculated:  
 02/08/2007 11:27 AM/

**Meteo data report, height: 20.0 m**

Name of meteo object: Beresford



Project:

**Beresford**

Description:

Data from file(s)  
 Y:\5000\shared\Anemometer\_Loan\_Programs\WAPA Loans\SD - City of Beresford - SD\Wind Data\Beresford 051201.csv  
 Y:\5000\shared\Anemometer\_Loan\_Programs\WAPA Loans\SD - City of Beresford - SD\Wind Data\Beresford 060102.csv  
 Y:\5000\shared\Anemometer\_Loan\_Programs\WAPA Loans\SD - City of Beresford - SD\Wind Data\Beresford 060131.csv  
 Y:\5000\shared\Anemometer\_Loan\_Programs\WAPA Loans\SD - City of Beresford - SD\Wind Data\Beresford 060301.csv  
 Y:\5000\shared\Anemometer\_Loan\_Programs\WAPA Loans\SD - City of Beresford - SD\Wind Data\Beresford 060402.csv  
 Y:\5000\shared\Anemometer\_Loan\_Programs\WAPA Loans\SD - City of Beresford - SD\Wind Data\Beresford 060501.csv  
 Y:\5000\shared\Anemometer\_Loan\_Programs\WAPA Loans\SD - City of Beresford - SD\Wind Data\Beresford 060601.csv  
 Y:\5000\shared\Anemometer\_Loan\_Programs\WAPA Loans\SD - City of Beresford - SD\Wind Data\Beresford 060710.csv  
 Y:\5000\shared\Anemometer\_Loan\_Programs\WAPA Loans\SD - City of Beresford - SD\Wind Data\Beresford 060731.csv  
 Y:\5000\shared\Anemometer\_Loan\_Programs\WAPA Loans\SD - City of Beresford - SD\Wind Data\Beresford 060830.csv  
 Y:\5000\shared\Anemometer\_Loan\_Programs\WAPA Loans\SD - City of Beresford - SD\Wind Data\Beresford 061005.csv  
 Y:\5000\shared\Anemometer\_Loan\_Programs\WAPA Loans\SD - City of Beresford - SD\Wind Data\Beresford 061101.csv  
 Y:\5000\shared\Anemometer\_Loan\_Programs\WAPA Loans\SD - City of Beresford - SD\Wind Data\Beresford 061203.csv

Printed/Page

02/08/2007 11:27 AM / 8

Licensed user:

**National Renewable Energy Laboratory**  
 1617 Cole Blvd. (MS3811)  
 US-GOLDEN, CO 80401  
 +1 303-384-7027

Calculated:

02/08/2007 11:27 AM/

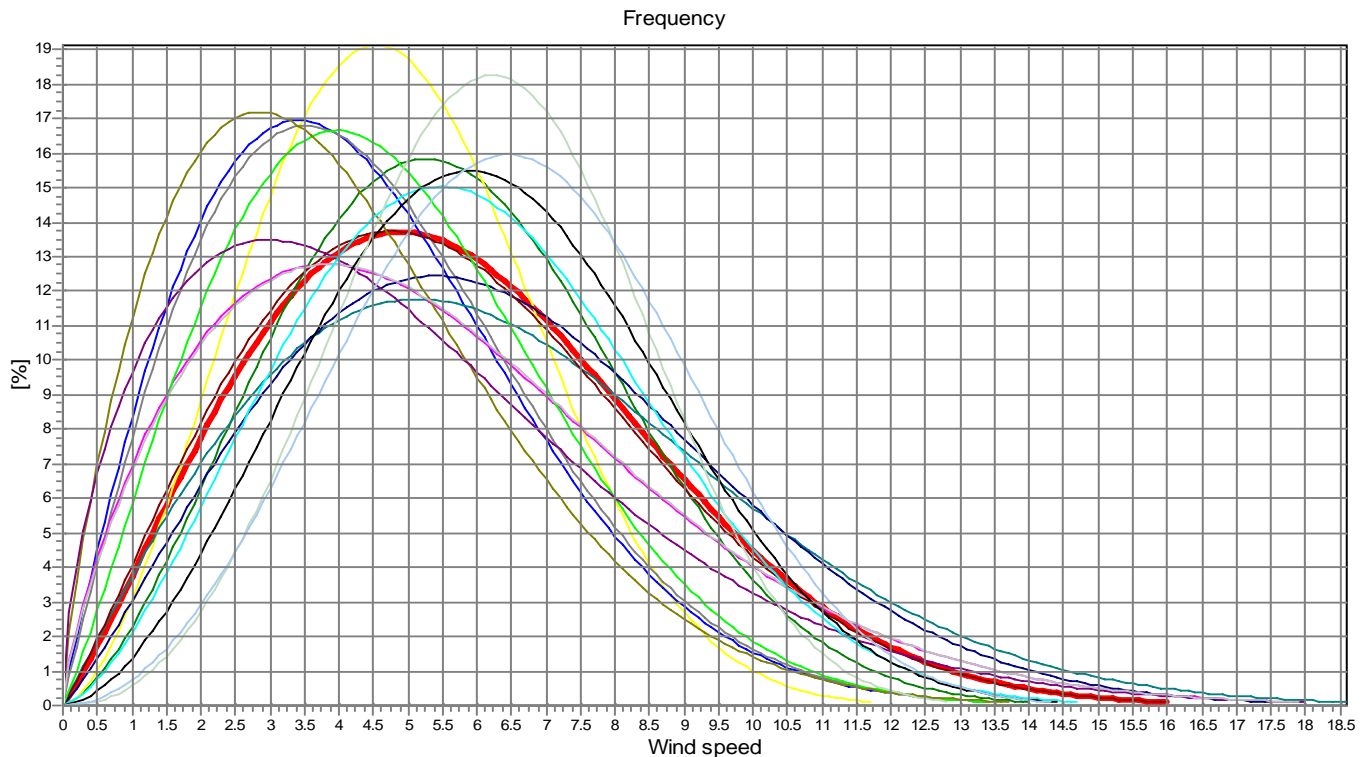
### Meteo data report, height: 20.0 m

Name of meteo object: Beresford

#### Weibull Data

k-parameter correction: 0.0080/m

Sector	A- parameter [m/s]	Mean wind speed [m/s]	k- parameter	Frequency	Frequency [%]	Wind shear
0-N	6.43	5.70	2.523	5.07	5.1	0.00
1-NNE	5.47	4.86	2.609	3.75	3.7	0.00
2-NE	4.96	4.40	1.936	2.92	2.9	0.00
3-ENE	5.06	4.48	1.971	3.44	3.4	0.00
4-E	6.20	5.52	1.745	5.97	6.0	0.00
5-ESE	7.28	6.45	1.995	12.05	12.0	0.00
6-SE	7.23	6.41	2.148	11.25	11.2	0.00
7-SSE	6.46	5.72	2.103	4.42	4.4	0.00
8-S	5.36	4.75	2.124	4.03	4.0	0.00
9-SSW	4.62	4.11	1.754	3.83	3.8	0.00
10-SW	5.62	5.04	1.583	4.71	4.7	0.00
11-WSW	6.22	5.54	1.757	4.51	4.5	0.00
12-W	6.72	5.96	2.502	6.39	6.4	0.00
13-WNW	6.98	6.21	2.720	8.36	8.4	0.00
14-NW	6.95	6.24	3.275	9.74	9.7	0.00
15-NNW	7.38	6.59	3.007	9.57	9.6	0.00
mean	6.56	5.81	2.143	100.00	100.0	0.00



— Total A: 6.6 m/s k 2.14 Vm: 5.8 m/s	— N A: 6.4 m/s k 2.52 Vm: 5.7 m/s	— NNE A: 5.5 m/s k 2.61 Vm: 4.9 m/s	— NE A: 5.0 m/s k 1.94 Vm: 4.4 m/s
— ENE A: 5.1 m/s k 1.97 Vm: 4.5 m/s	— E A: 6.2 m/s k 1.75 Vm: 5.5 m/s	— ESE A: 7.3 m/s k 2.00 Vm: 6.5 m/s	— SE A: 7.2 m/s k 2.15 Vm: 6.4 m/s
— SSE A: 6.5 m/s k 2.10 Vm: 5.7 m/s	— S A: 5.4 m/s k 2.12 Vm: 4.7 m/s	— SSW A: 4.6 m/s k 1.75 Vm: 4.1 m/s	— SW A: 5.6 m/s k 1.58 Vm: 5.0 m/s
— WSW A: 6.2 m/s k 1.76 Vm: 5.5 m/s	— WA A: 6.7 m/s k 2.50 Vm: 6.0 m/s	— WNW A: 7.0 m/s k 2.72 Vm: 6.2 m/s	— NW A: 7.0 m/s k 3.28 Vm: 6.2 m/s
— NNW A: 7.4 m/s k 3.01 Vm: 6.6 m/s			