

Project: **Citizen Potawatomi**
 Description:
 Data from file(s)
 Y:\5000\shared\Anemometer_Loan_Programs\WPA.NA.Loans\Citizen Potawatomi - OK\Wind Data\CPN 050629.csv
 Y:\5000\shared\Anemometer_Loan_Programs\WPA.NA.Loans\Citizen Potawatomi - OK\Wind Data\CPN 041115.csv
 Y:\5000\shared\Anemometer_Loan_Programs\WPA.NA.Loans\Citizen Potawatomi - OK\Wind Data\CPN 041215.csv
 Y:\5000\shared\Anemometer_Loan_Programs\WPA.NA.Loans\Citizen Potawatomi - OK\Wind Data\CPN 050114.csv
 Y:\5000\shared\Anemometer_Loan_Programs\WPA.NA.Loans\Citizen Potawatomi - OK\Wind Data\CPN 050216.csv
 Y:\5000\shared\Anemometer_Loan_Programs\WPA.NA.Loans\Citizen Potawatomi - OK\Wind Data\CPN 050325.csv
 Y:\5000\shared\Anemometer_Loan_Programs\WPA.NA.Loans\Citizen Potawatomi - OK\Wind Data\CPN 050524.csv
 Y:\5000\shared\Anemometer_Loan_Programs\WPA.NA.Loans\Citizen Potawatomi - OK\Wind Data\CPN 041108.csv
 Y:\5000\shared\Anemometer_Loan_Programs\WPA.NA.Loans\Citizen Potawatomi - OK\Wind Data\CPN 050728.csv
 Y:\5000\shared\Anemometer_Loan_Programs\WPA.NA.Loans\Citizen Potawatomi - OK\Wind Data\CPN 050830.csv
 Y:\5000\shared\Anemometer_Loan_Programs\WPA.NA.Loans\Citizen Potawatomi - OK\Wind Data\CPN 050929.csv
 Y:\5000\shared\Anemometer_Loan_Programs\WPA.NA.Loans\Citizen Potawatomi - OK\Wind Data\CPN 051103.csv
 Y:\5000\shared\Anemometer_Loan_Programs\WPA.NA.Loans\Citizen Potawatomi - OK\Wind Data\CPN 051212.csv

Printed/Page
 02/23/2006 2:34 PM / 1
 Licensed user:
National Renewable Energy Laboratory
 1617 Cole Blvd. (MS3811)
 US-GOLDEN, CO 80401
 +1 303-384-7027
 Calculated:
 02/23/2006 2:34 PM

Meteo data report, height: 20.0 m

Name of meteo object: Citizen Potawatomi

Data from: 11/08/2004 2:50 PM Data to: 02/13/2006 1:50 PM Observations: 66522 Observations per day: 144 Recovery rate: 100%

day	11/04	12/04	01/05	02/05	03/05	04/05	05/05	06/05	07/05	08/05	09/05	10/05	11/05	12/05	01/06	02/06	03/06
1		144	144	144	144	144	(116)	(139)	144	(141)	(142)	144	144	144	144	(0)	
2		144	144	(116)	144	144	(141)	144	(141)	(143)	(142)	144	144	144	(142)	(0)	
3		144	144	(126)	144	144	(129)	144	144	(137)	(142)	144	144	144	(143)	(0)	
4		144	144	144	144	144	(138)	144	144	(129)	144	144	144	144	144	(0)	
5		144	144	144	144	144	(137)	(142)	144	(140)	144	144	144	144	144	(0)	
6		(142)	144	144	144	144	144	(141)	(141)	(129)	(143)	144	(143)	144	144	(0)	
7		144	144	144	144	(143)	144	(143)	(142)	(142)	(137)	144	144	144	144	(0)	
8	(55)	144	144	144	(143)	(132)	144	144	(140)	(134)	144	144	144	(136)	(131)	(0)	
9	144	144	144	144	(139)	144	144	144	(129)	(138)	144	144	144	(143)	144	(0)	
10	144	144	144	144	144	144	144	(143)	(140)	(140)	144	144	(142)	144	144	(0)	
11	144	144	(138)	144	144	144	144	144	(129)	144	(137)	(143)	144	144	144	(0)	
12	144	144	(142)	144	(143)	144	144	144	(118)	144	144	(135)	(143)	(135)	144	(0)	
13	144	144	144	144	144	144	144	144	(135)	(136)	144	(88)	(140)	(143)	144	(0)	
14	144	(140)	144	144	(133)	(142)	(136)	(134)	(136)	(142)	(143)	(119)	(138)	144	144		
15	(143)	144	144	144	(143)	(121)	144	(135)	(130)	(124)	(142)	(135)	144	144	144		
16	144	144	144	144	144	144	(140)	144	(118)	(127)	144	144	(132)	(140)	144		
17	144	(142)	144	(141)	144	144	144	(143)	144	144	(139)	144	144	(140)	144		
18	(136)	144	144	(133)	144	144	144	144	144	144	144	144	144	144	144		
19	(127)	144	(129)	144	144	144	(139)	144	144	144	(142)	144	144	(143)	144		
20	(143)	144	(138)	144	144	144	144	144	144	144	(142)	144	(143)	(108)	144		
21	144	144	(135)	(140)	144	144	144	(131)	144	(133)	144	144	144	(140)	(134)		
22	(104)	144	144	144	144	144	144	(136)	(142)	(143)	(143)	(138)	144	144	(140)		
23	(127)	144	(140)	144	144	144	144	144	144	(124)	144	144	144	(143)	(143)		
24	144	144	144	(134)	144	(141)	144	144	144	144	144	144	144	144	144	(59)	
25	144	144	144	(140)	144	(143)	(140)	144	144	144	(139)	(136)	144	(138)	(0)		
26	144	(126)	144	(142)	144	144	(138)	144	144	144	144	144	144	144	(0)		
27	144	144	144	(135)	144	(134)	(89)	144	144	(143)	144	144	144	144	(0)		
28	144	144	(135)	144	144	144	(113)	144	(140)	(113)	144	144	144	144	(0)		
29	(143)	144	144		144	144	(135)	144	(115)	(142)	144	144	(141)	(142)	(0)		
30	(143)	144	(143)		144	144	144	144	(136)	144	(139)	(140)	(138)	(141)	(0)		
31		144	(143)		144		(139)		(135)	(139)		144		144	(0)		
%	(97)	(99)	(99)	(98)	(100)	(99)	(96)	(99)	(96)	(96)	(99)	(97)	(99)	(98)	(75)	(0)	(0)

Project:

Citizen Potawatomi

Description:

Data from file(s)
 Y:\5000\shared\Anemometer_Loan_Programs\WPA.NA.Loans\Citizen Potawatomi - OK\Wind Data\CPN 050629.csv
 Y:\5000\shared\Anemometer_Loan_Programs\WPA.NA.Loans\Citizen Potawatomi - OK\Wind Data\CPN 041115.csv
 Y:\5000\shared\Anemometer_Loan_Programs\WPA.NA.Loans\Citizen Potawatomi - OK\Wind Data\CPN 041215.csv
 Y:\5000\shared\Anemometer_Loan_Programs\WPA.NA.Loans\Citizen Potawatomi - OK\Wind Data\CPN 050114.csv
 Y:\5000\shared\Anemometer_Loan_Programs\WPA.NA.Loans\Citizen Potawatomi - OK\Wind Data\CPN 050216.csv
 Y:\5000\shared\Anemometer_Loan_Programs\WPA.NA.Loans\Citizen Potawatomi - OK\Wind Data\CPN 050325.csv
 Y:\5000\shared\Anemometer_Loan_Programs\WPA.NA.Loans\Citizen Potawatomi - OK\Wind Data\CPN 050524.csv
 Y:\5000\shared\Anemometer_Loan_Programs\WPA.NA.Loans\Citizen Potawatomi - OK\Wind Data\CPN 041108.csv
 Y:\5000\shared\Anemometer_Loan_Programs\WPA.NA.Loans\Citizen Potawatomi - OK\Wind Data\CPN 050728.csv
 Y:\5000\shared\Anemometer_Loan_Programs\WPA.NA.Loans\Citizen Potawatomi - OK\Wind Data\CPN 050830.csv
 Y:\5000\shared\Anemometer_Loan_Programs\WPA.NA.Loans\Citizen Potawatomi - OK\Wind Data\CPN 050929.csv
 Y:\5000\shared\Anemometer_Loan_Programs\WPA.NA.Loans\Citizen Potawatomi - OK\Wind Data\CPN 051103.csv
 Y:\5000\shared\Anemometer_Loan_Programs\WPA.NA.Loans\Citizen Potawatomi - OK\Wind Data\CPN 051212.csv

Printed/Page

02/23/2006 2:34 PM / 2

Licensed user:

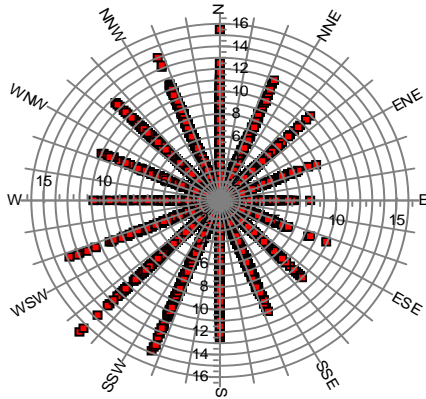
National Renewable Energy Laboratory
 1617 Cole Blvd. (MS3811)
 US-GOLDEN, CO 80401
 +1 303-384-7027

Calculated:

02/23/2006 2:34 PM/

Meteo data report, height: 20.0 m

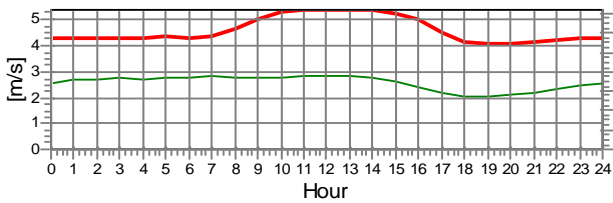
Name of meteo object: Citizen Potawatomi



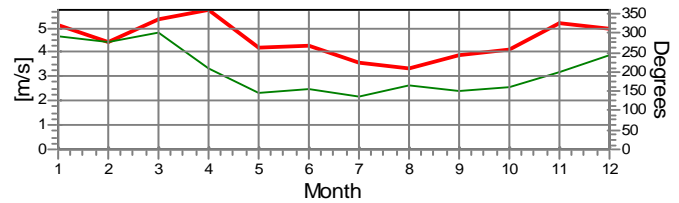
Monthly mean values of wind speed in m/s

Month	2004	2005	2006	mean	mean of months
Jan		4.6	5.9	5.1	5.2
Feb		4.4		4.4	4.4
Mar		5.4		5.4	5.4
Apr		5.7		5.7	5.7
May		4.2		4.2	4.2
Jun		4.3		4.3	4.3
Jul		3.5		3.5	3.5
Aug		3.3		3.3	3.3
Sep		3.9		3.9	3.9
Oct		4.1		4.1	4.1
Nov	4.7	5.6		5.2	5.2
Dec	5.1	4.8		4.9	4.9
mean, all data	4.9	4.5	5.9	4.6	
mean of months	4.9	4.5	5.9		4.5

Wind speed [m/s]

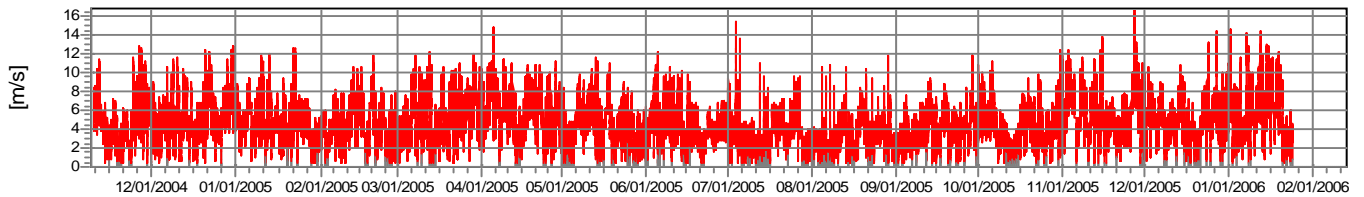


— Wind speed. Height: 20.0 m — Wind direction. Height: 20.0 m

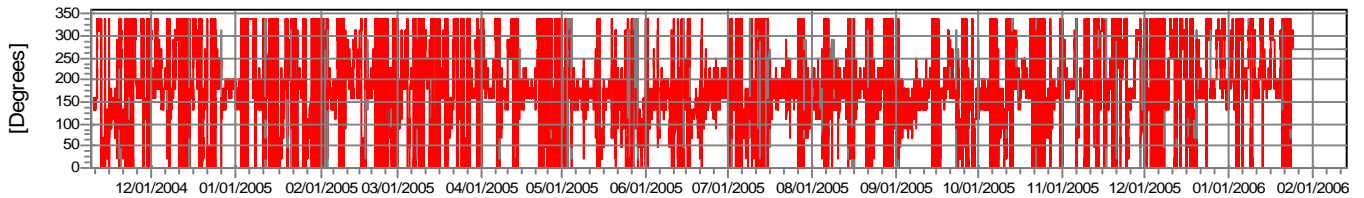


— Wind speed. Height: 20.0 m — Wind direction. Height: 20.0 m

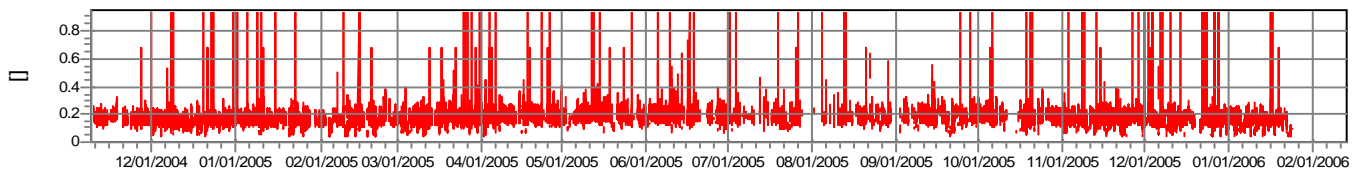
Wind speed



Wind direction



**Turbulence intensity
V>4.0 m/s**



Project:

Citizen Potawatomi

Description:

Data from file(s)
 Y:\5000\shared\Anemometer_Loan_Programs\WPA.NA.Loans\Citizen Potawatomi - OK\Wind Data\CPN 050629.csv
 Y:\5000\shared\Anemometer_Loan_Programs\WPA.NA.Loans\Citizen Potawatomi - OK\Wind Data\CPN 041115.csv
 Y:\5000\shared\Anemometer_Loan_Programs\WPA.NA.Loans\Citizen Potawatomi - OK\Wind Data\CPN 041215.csv
 Y:\5000\shared\Anemometer_Loan_Programs\WPA.NA.Loans\Citizen Potawatomi - OK\Wind Data\CPN 050114.csv
 Y:\5000\shared\Anemometer_Loan_Programs\WPA.NA.Loans\Citizen Potawatomi - OK\Wind Data\CPN 050216.csv
 Y:\5000\shared\Anemometer_Loan_Programs\WPA.NA.Loans\Citizen Potawatomi - OK\Wind Data\CPN 050325.csv
 Y:\5000\shared\Anemometer_Loan_Programs\WPA.NA.Loans\Citizen Potawatomi - OK\Wind Data\CPN 050524.csv
 Y:\5000\shared\Anemometer_Loan_Programs\WPA.NA.Loans\Citizen Potawatomi - OK\Wind Data\CPN 041108.csv
 Y:\5000\shared\Anemometer_Loan_Programs\WPA.NA.Loans\Citizen Potawatomi - OK\Wind Data\CPN 050728.csv
 Y:\5000\shared\Anemometer_Loan_Programs\WPA.NA.Loans\Citizen Potawatomi - OK\Wind Data\CPN 050830.csv
 Y:\5000\shared\Anemometer_Loan_Programs\WPA.NA.Loans\Citizen Potawatomi - OK\Wind Data\CPN 050929.csv
 Y:\5000\shared\Anemometer_Loan_Programs\WPA.NA.Loans\Citizen Potawatomi - OK\Wind Data\CPN 051103.csv
 Y:\5000\shared\Anemometer_Loan_Programs\WPA.NA.Loans\Citizen Potawatomi - OK\Wind Data\CPN 051212.csv

Printed/Page

02/23/2006 2:34 PM / 4

Licensed user:

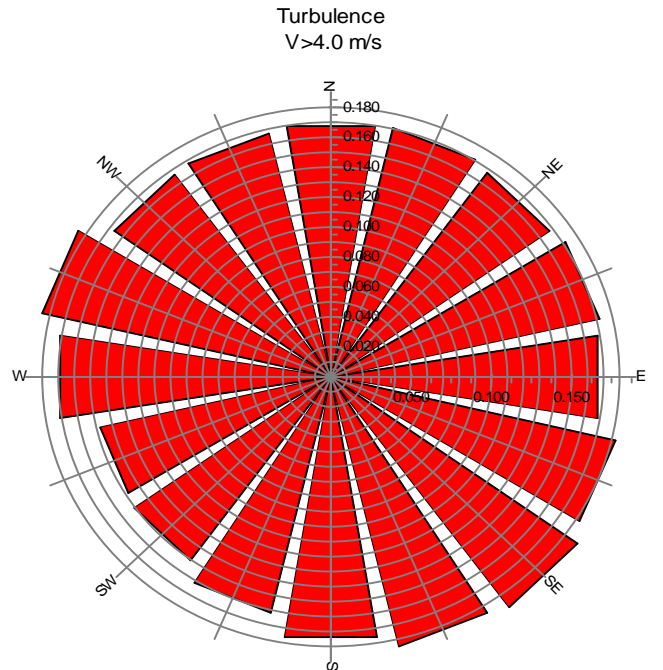
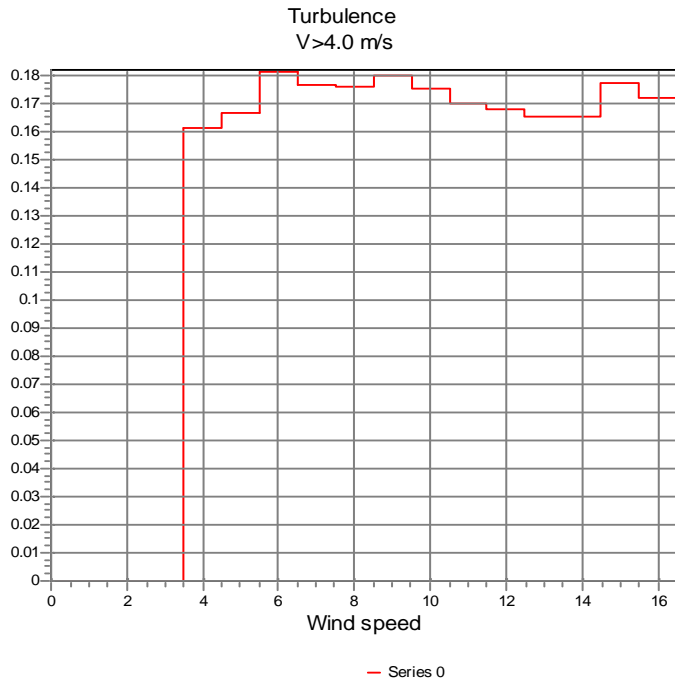
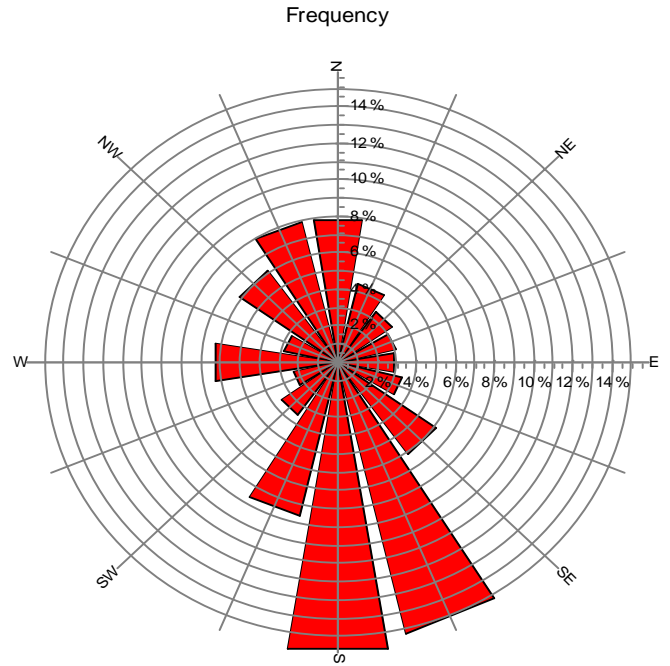
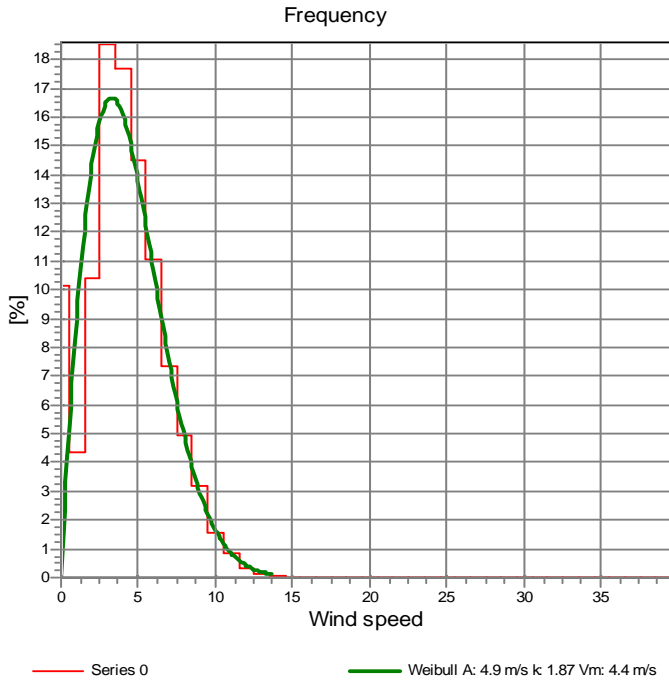
National Renewable Energy Laboratory
 1617 Cole Blvd. (MS3811)
 US-GOLDEN, CO 80401
 +1 303-384-7027

Calculated:

02/23/2006 2:34 PM/

Meteo data report, height: 20.0 m

Name of meteo object: Citizen Potawatomi



Project:

Citizen Potawatomi

Description:

Data from file(s)
 Y:\5000\shared\Anemometer_Loan_Programs\WPA.NA.Loans\Citizen Potawatomi - OK\Wind Data\CPN 050629.csv
 Y:\5000\shared\Anemometer_Loan_Programs\WPA.NA.Loans\Citizen Potawatomi - OK\Wind Data\CPN 041115.csv
 Y:\5000\shared\Anemometer_Loan_Programs\WPA.NA.Loans\Citizen Potawatomi - OK\Wind Data\CPN 041215.csv
 Y:\5000\shared\Anemometer_Loan_Programs\WPA.NA.Loans\Citizen Potawatomi - OK\Wind Data\CPN 050114.csv
 Y:\5000\shared\Anemometer_Loan_Programs\WPA.NA.Loans\Citizen Potawatomi - OK\Wind Data\CPN 050216.csv
 Y:\5000\shared\Anemometer_Loan_Programs\WPA.NA.Loans\Citizen Potawatomi - OK\Wind Data\CPN 050325.csv
 Y:\5000\shared\Anemometer_Loan_Programs\WPA.NA.Loans\Citizen Potawatomi - OK\Wind Data\CPN 050524.csv
 Y:\5000\shared\Anemometer_Loan_Programs\WPA.NA.Loans\Citizen Potawatomi - OK\Wind Data\CPN 041108.csv
 Y:\5000\shared\Anemometer_Loan_Programs\WPA.NA.Loans\Citizen Potawatomi - OK\Wind Data\CPN 050728.csv
 Y:\5000\shared\Anemometer_Loan_Programs\WPA.NA.Loans\Citizen Potawatomi - OK\Wind Data\CPN 050830.csv
 Y:\5000\shared\Anemometer_Loan_Programs\WPA.NA.Loans\Citizen Potawatomi - OK\Wind Data\CPN 050929.csv
 Y:\5000\shared\Anemometer_Loan_Programs\WPA.NA.Loans\Citizen Potawatomi - OK\Wind Data\CPN 051103.csv
 Y:\5000\shared\Anemometer_Loan_Programs\WPA.NA.Loans\Citizen Potawatomi - OK\Wind Data\CPN 051212.csv

Printed/Page

02/23/2006 2:34 PM / 5

Licensed user:

National Renewable Energy Laboratory
 1617 Cole Blvd. (MS3811)
 US-GOLDEN, CO 80401
 +1 303-384-7027

Calculated:

02/23/2006 2:34 PM/

Meteo data report, height: 20.0 m

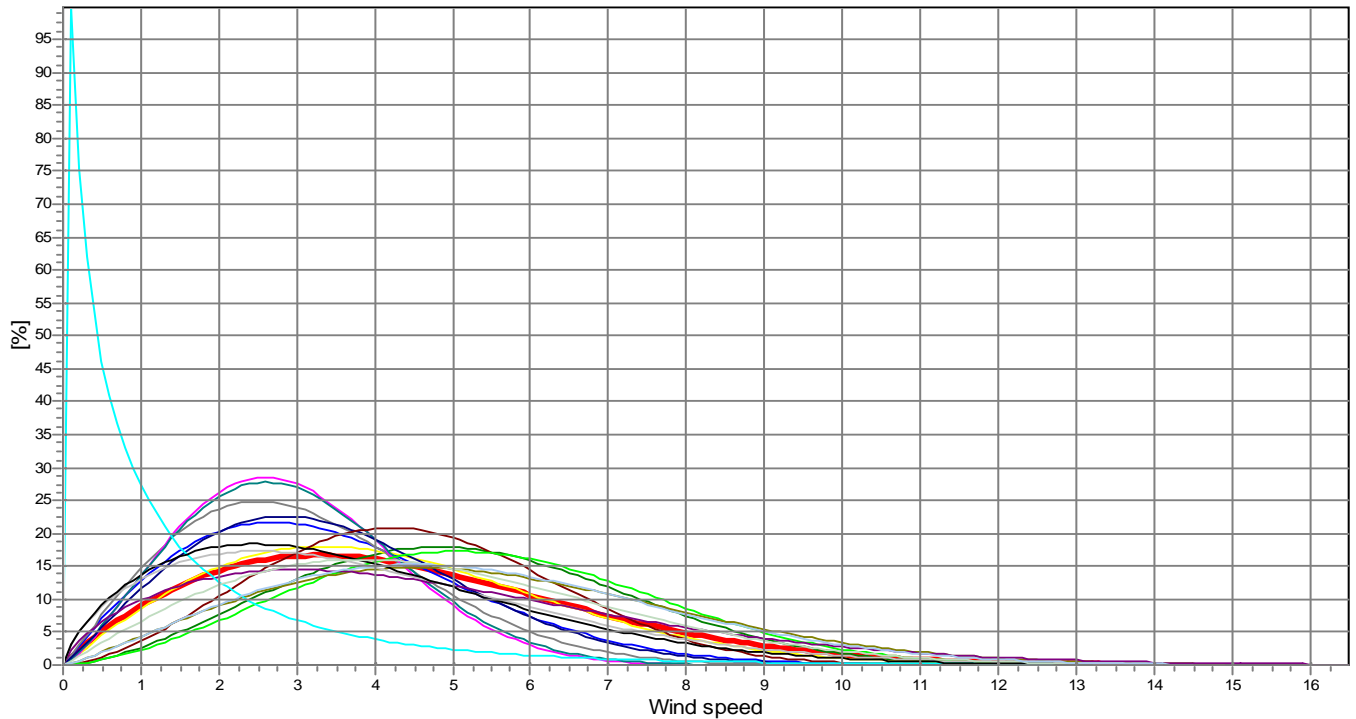
Name of meteo object: Citizen Potawatomi

Weibull Data

k-parameter correction: 0.0080/m

Sector	A- parameter [m/s]	Mean wind speed [m/s]	k- parameter	Frequency	Frequency [%]	Wind shear
0-N	5.80	5.15	2.592	7.93	7.9	0.00
1-NNE	4.75	4.21	1.993	4.39	4.4	0.00
2-NE	3.89	3.45	1.952	3.37	3.4	0.00
3-ENE	3.50	3.10	2.036	3.01	3.0	0.00
4-E	3.32	2.94	2.303	2.88	2.9	0.00
5-ESE	3.37	2.98	2.266	3.40	3.4	0.00
6-SE	3.90	3.45	2.083	6.22	6.2	0.00
7-SSE	5.06	4.50	2.639	15.23	15.2	0.00
8-S	6.08	5.40	2.624	15.88	15.9	0.00
9-SSW	6.09	5.39	2.145	8.66	8.7	0.00
10-SW	5.32	4.76	1.646	3.53	3.5	0.00
11-WSW	4.45	3.98	1.641	2.31	2.3	0.00
12-W	1.20	1.43	0.747	6.30	6.3	0.00
13-WNW	4.23	3.77	1.677	2.81	2.8	0.00
14-NW	5.36	4.75	2.009	6.14	6.1	0.00
15-NNW	5.97	5.29	2.184	7.94	7.9	0.00
mean	4.93	4.38	1.872	100.00	100.0	0.00

Frequency



- Total A: 4.9 m/s k: 1.87 Vm: 4.4 m/s
- ENE A: 3.5 m/s k: 2.04 Vm: 3.1 m/s
- SSE A: 5.1 m/s k: 2.64 Vm: 4.5 m/s
- WSW A: 4.4 m/s k: 1.64 Vm: 4.0 m/s
- NNW A: 6.0 m/s k: 2.18 Vm: 5.3 m/s
- N A: 5.8 m/s k: 2.59 Vm: 5.2 m/s
- E A: 3.3 m/s k: 2.30 Vm: 2.9 m/s
- S A: 6.1 m/s k: 2.62 Vm: 5.4 m/s
- W A: 1.2 m/s k: 0.75 Vm: 1.4 m/s
- NNE A: 4.8 m/s k: 1.99 Vm: 4.2 m/s
- ESE A: 3.4 m/s k: 2.27 Vm: 3.0 m/s
- SSW A: 6.1 m/s k: 2.14 Vm: 5.4 m/s
- WNW A: 4.2 m/s k: 1.68 Vm: 3.8 m/s
- NE A: 3.9 m/s k: 1.95 Vm: 3.5 m/s
- SE A: 3.9 m/s k: 2.08 Vm: 3.5 m/s
- SW A: 5.3 m/s k: 1.65 Vm: 4.8 m/s
- NW A: 5.4 m/s k: 2.01 Vm: 4.7 m/s